

Grades

Huntsburg, N. & S.

Center Road

FACING ROAD

LEVEL BOOK

743

TABLE FOR REDUCING PERCHES TO FEET AND INCHES.

PERCH.	FEET.	PERCH.	FEET.	PERCH.	FEET.	PERCH.	FEET.	PERCH.	FEET.	PERCH.	FEET.
1	16 6 in.	21	3 46 6 in.	41	6 76 6 in.	61	10 06 6 in.	81	13 36 6 in.	101	16 50 0
2	33 0	22	3 63 0	42	6 93 0	62	10 23 0	82	13 53 0		
3	49 6	23	3 79 6	43	7 09 6	63	10 39 6	83	14 09 6		
4	66 0	24	3 96 0	44	7 26 0	64	10 56 0	84	14 26 0		
5	82 6	25	4 12 6	45	7 42 6	65	10 72 6	85	14 42 6		
6	99 0	26	4 29 0	46	7 59 0	66	10 89 0	86	14 59 0		
7	1 15 6	27	4 45 6	47	7 75 6	67	11 05 6	87	15 15 6		
8	1 32 0	28	4 62 0	48	7 92 0	68	11 22 0	88	15 32 0		
9	1 48 6	29	4 78 6	49	8 08 6	69	11 38 6	89	15 48 6		
10	1 65 0	30	4 95 0	50	8 25 0	70	11 55 0	90	16 05 0		
11	1 81 6	31	5 11 6	51	8 41 6	71	11 71 6	91	16 21 6		
12	1 98 0	32	5 28 0	52	8 58 0	72	11 88 0	92	16 38 0		
13	2 14 6	33	5 44 6	53	8 74 6	73	12 04 6	93	16 54 6		
14	2 31 0	34	5 61 0	54	8 91 0	74	12 21 0	94	17 11 0		
15	2 47 6	35	5 77 6	55	9 07 6	75	12 37 6	95	17 27 6		
16	2 64 0	36	5 94 0	56	9 24 0	76	12 54 0	96	17 44 0		
17	2 80 6	37	6 10 6	57	9 40 6	77	12 70 6	97	18 00 6		
18	2 97 0	38	6 27 0	58	9 57 0	78	12 87 0	98	18 16 6		
19	3 13 6	39	6 43 6	59	9 73 6	79	13 03 6	99	18 33 6		
20	3 30 0	40	6 60 0	60	9 90 0	80	13 20 0	100	18 50 0		

PLEASE RETURN TO
 GEORGE AUGA COUNTY ENGINEER
 COURT HOUSE
 CHARDON, O.
 PHONE 250-X

B. K. ELLIOTT COMPANY, PITTSBURG, PA.

DRAWING MATERIALS AND SURVEYING INSTRUMENTS

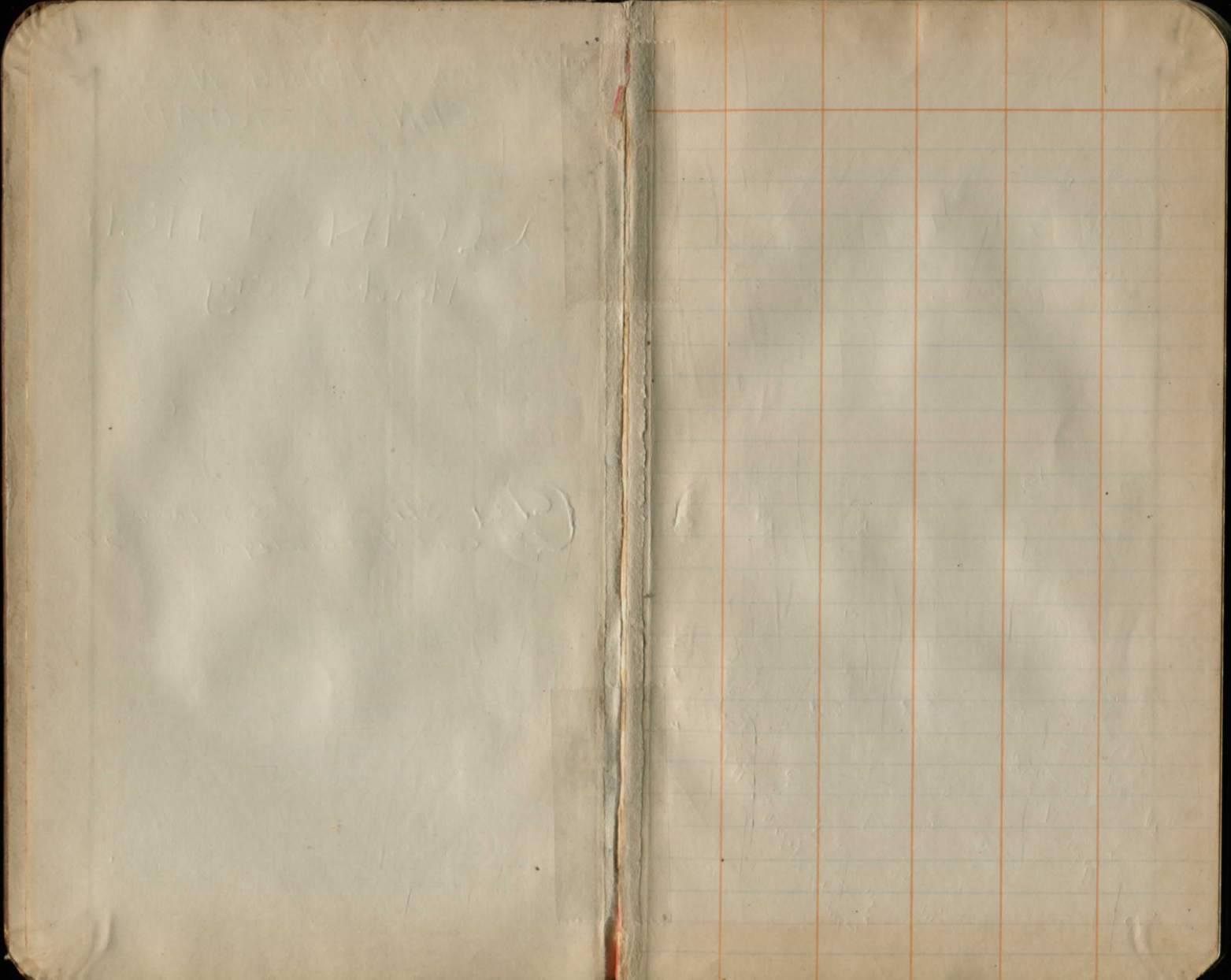
58.528
 Check Grades
 HUNTSBURG N+S,
 CENTER ROAD

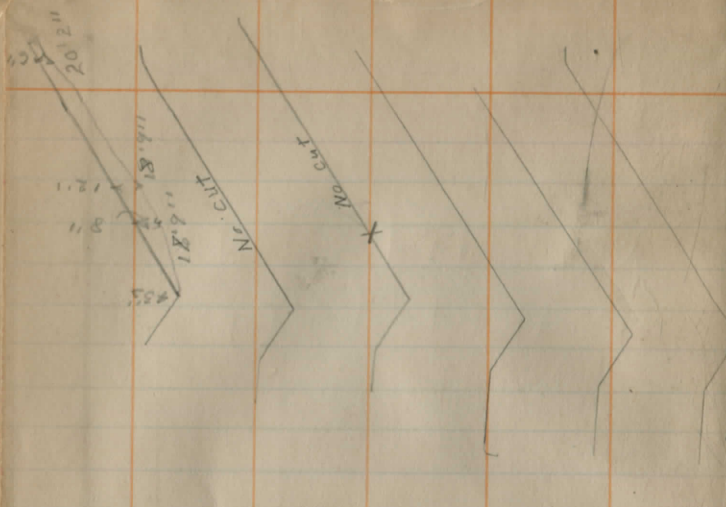
KLEIN DITCH
 Huntsburg 69-

Clay Street - No. 49-B
 (53)
 Pg. 43-68

(Clay Street - #53 Thompson
 2nd Culvert N. of Massey Rd
 Pg 74

113





Sta 109

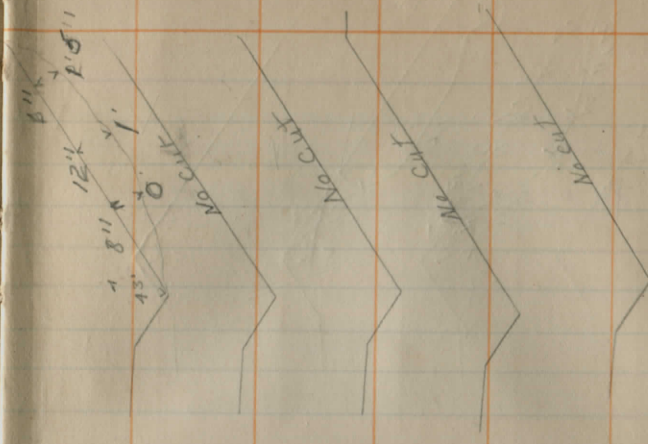
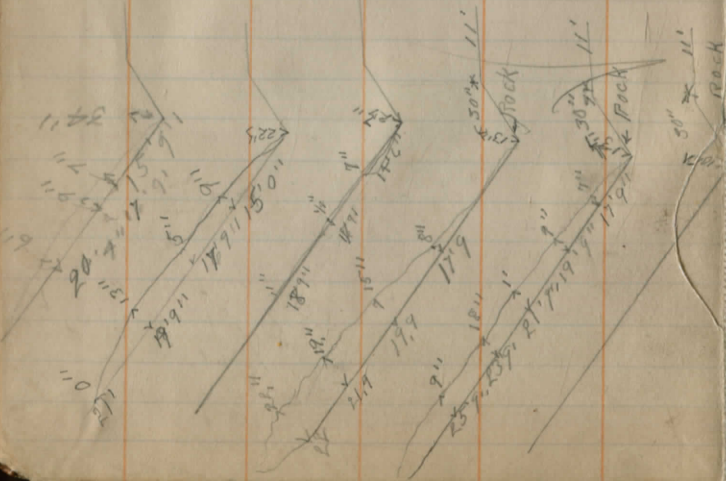
Sta 105

Sta 104

Sta 105

Sta 102

Sta 101



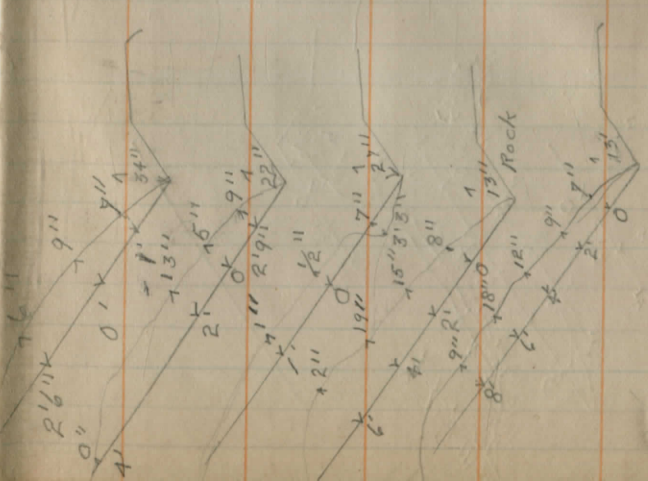
Sta 109

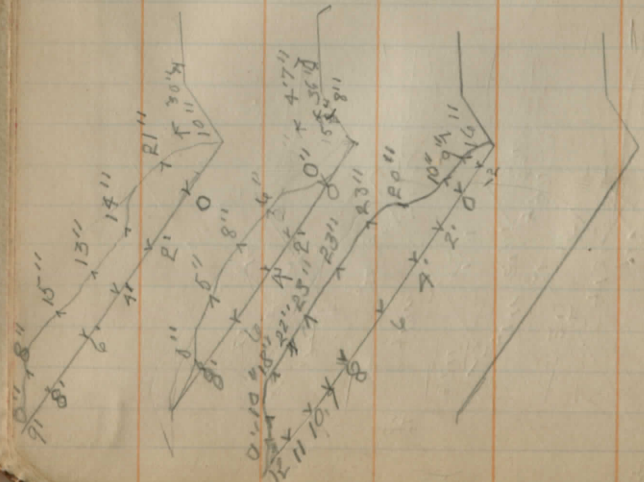
Sta 105

Sta 104

Sta 103

Sta 102

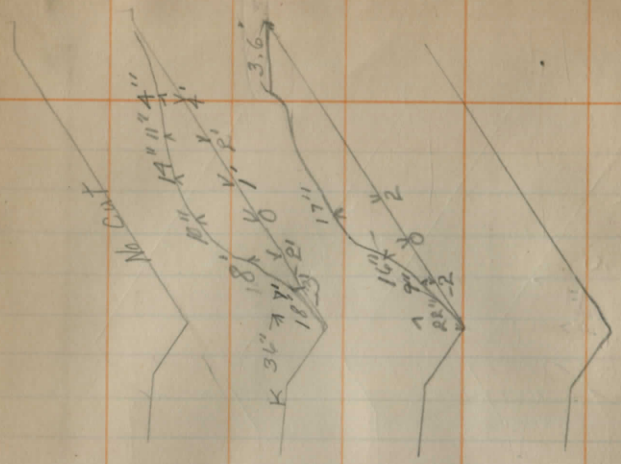




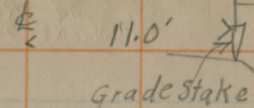
Sta 101

Sta 98

Sta 97



No. Out



Cross sections of banks taken with 2 level rods; upper figure shows vertical distance from profile grade; lower figure shows horizontal distance outside of grade stake set 11 feet from $\frac{1}{2}$ Right side, No distinct slopes.

Slope O.K.

Left

$$\frac{+1.6 + 0.8}{1.6 \quad 7.2} \quad \frac{-2.5}{3} \quad \frac{-1.3}{0}$$

Slope O.K.

$$\frac{+2.2 + 0.8}{12.3 \quad 9.7} \quad \frac{0.0}{5.3} \quad \frac{-2.0}{3.0} \quad \frac{-1.0}{0}$$

96

92

91

Sept, 28, 1928, P.M. Cool Cloudy

D. Parks, T
C. Rand Rod
W.C. Marks Tape

Stake
Elevation

86

85 5.31 11.62.00

84 5.44 1159.00

83 8.95 1155.50

82

81

80

80

79 6.24 1152.07

78 4.12 1154.20

77 6.62 1153.77

West, Cross Sections

4
East

O.K.

3.0 4.0 4.5 6.8 6.8 5.7 5.6 6.1 7.5 5.2 4.1
21.5 18.6 17.4 14.6 13.5 11.0 0 11.0 14.1 12.9 22.8

8.0 3.2 7.0 6.9 6.0 5.8 5.8 6.8 7.5 4.7 4.2 3.4
20.7 19.6 14.7 13.7 11.8 11.0 0 11.0 13.7 12.5 19.0 20.8

2.7 11.1 17.2 11.1 14.0 9.7 9.6 11.3 10.4 11.0 11.4 11.1
17.1 15.2 14.6 13.7 12.1 11.0 0 11.0 11.5 12.8 13.7 19.6

6.1 7.4 7.7 5.8 9.2 8.5 8.0
21.9 19.5 17.2 12.2 12.6 18.2 20.1

Back
No. Slopes

No Back Slopes

No Back Slopes

6.4 2.3 8.1 7.5 6.9 6.8 6.4 7.1 7.2 8.1 8.5 8.3 5.8
18.6 16.1 14.5 13.5 11.7 11.0 0 11.0 11.7 13.8 14.8 15.2 13.5

5.2 5.7 5.2
19.7 19.2 19.8

4.3 6.6 6.9 6.5 5.2 4.8 5.6 5.8 6.8 7.1 6.8
18.6 18.6 14.3 13.5 11.0 0 11.0 12.3 15.0 15.7 16.4

3.8 4.1 5.6 5.3 4.6
20.2 19.7 18.2 18.4 19.5

4.1 5.8 7.9 8.8 7.5 7.3 7.5 9.2 6.6 6.2
20.5 18.2 17.9 14.0 11.3 0 11.0 14.4 18.6 18.8

1.5 1.9 2.8 3.1 6.0 4.8
25.2 23.0 23.0 22.0 19.4 21.3

76 10,33

1150,02 1150,02

$\frac{10,9}{18,4}$	$\frac{11,3}{16,8}$	$\frac{12,3}{16,1}$	$\frac{12,1}{15,5}$	$\frac{11,0}{15,1}$	$\frac{10,9}{0}$	$\frac{11,1}{10,3}$	$\frac{12,2}{12,6}$	$\frac{12,5}{13,6}$	$\frac{12,2}{14,2}$
---------------------	---------------------	---------------------	---------------------	---------------------	------------------	---------------------	---------------------	---------------------	---------------------

$\frac{6,9}{24,9}$	$\frac{7,2}{24,6}$	$\frac{7,3}{24,2}$	$\frac{8,4}{21,9}$	$\frac{8,6}{21,2}$	$\frac{10,3}{15,8}$	$\frac{8,8}{19,2}$	$\frac{8,0}{21,0}$	$\frac{7,6}{21,3}$	$\frac{4,8}{25,4}$
--------------------	--------------------	--------------------	--------------------	--------------------	---------------------	--------------------	--------------------	--------------------	--------------------

$\frac{4,7}{29,8}$	$\frac{5,2}{27,7}$	$\frac{5,7}{27,2}$
--------------------	--------------------	--------------------

75 5,42

1145,42

$\frac{6,4}{17,5}$	$\frac{7,3}{17,0}$	$\frac{7,4}{16,7}$	$\frac{7,0}{15,8}$	$\frac{6,1}{13,4}$	$\frac{5,9}{8}$	$\frac{6,1}{9,1}$	$\frac{5,8}{10,3}$	$\frac{6,2}{14,6}$	$\frac{7,6}{17,0}$	$\frac{7,8}{16,6}$
--------------------	--------------------	--------------------	--------------------	--------------------	-----------------	-------------------	--------------------	--------------------	--------------------	--------------------

$\frac{2,3}{21,5}$	$\frac{3,5}{21,3}$	$\frac{3,8}{20,8}$	$\frac{4,1}{20,6}$	$\frac{7,4}{15,2}$	$\frac{5,9}{17,7}$	$\frac{5,2}{18,6}$	$\frac{5,0}{19,5}$	$\frac{4,5}{20,2}$
--------------------	--------------------	--------------------	--------------------	--------------------	--------------------	--------------------	--------------------	--------------------

$\frac{1,8}{25,8}$	$\frac{1,9}{22,6}$	$\frac{3,9}{21,4}$	$\frac{3,5}{21,8}$	$\frac{2,8}{23,4}$	$\frac{1,9}{24,1}$	$\frac{1,5}{26,6}$
--------------------	--------------------	--------------------	--------------------	--------------------	--------------------	--------------------

74

No Back Slope

73

No Back Slope

72

No Back Slope

71 6,33

1139,50

$\frac{9,3}{15,5}$	$\frac{9,2}{14,7}$	$\frac{9,2}{14,2}$	$\frac{7,2}{11,0}$	$\frac{6,9}{10,0}$	$\frac{6,5}{0}$	$\frac{7,2}{12,4}$	$\frac{8,5}{14,8}$	$\frac{8,7}{15,6}$	$\frac{8,0}{16,1}$
--------------------	--------------------	--------------------	--------------------	--------------------	-----------------	--------------------	--------------------	--------------------	--------------------

$\frac{6,8}{16,6}$	$\frac{7,1}{17,8}$	$\frac{8,0}{17,3}$	$\frac{8,3}{16,6}$	$\frac{9,1}{15,5}$	$\frac{6,5}{17,0}$	$\frac{6,2}{17,9}$	$\frac{4,9}{17,5}$	$\frac{4,3}{20,1}$
--------------------	--------------------	--------------------	--------------------	--------------------	--------------------	--------------------	--------------------	--------------------

$\frac{6,0}{21,7}$	$\frac{3,7}{22,0}$
--------------------	--------------------

Sept. 29, 1928 Cool Cloudy
 D. Parks
 C. Rand
 F. Sphon

70 8,63 1144,50

$\frac{10,7}{14,4}$	$\frac{9,3}{11,2}$	$\frac{9,1}{10,2}$	$\frac{9,3}{9,2}$	$\frac{9,3}{5}$	$\frac{9,9}{12,1}$	$\frac{10,5}{13,6}$	$\frac{10,6}{14,2}$	$\frac{8,1}{14,8}$
$\frac{7,2}{17,8}$	$\frac{7,5}{18,7}$	$\frac{8,6}{16,9}$	$\frac{8,9}{14,7}$	$\frac{10,4}{15,7}$	$\frac{7,8}{15,2}$	$\frac{5,9}{16,9}$	$\frac{5,6}{17,2}$	$\frac{5,0}{17,7}$
			$\frac{5,7}{22,6}$	$\frac{6,5}{21,2}$	$\frac{4,5}{20,0}$			

69 4,71 1148,44

$\frac{6,2}{14,5}$	$\frac{7,1}{14,0}$	$\frac{5,8}{11,3}$	$\frac{5,6}{10,5}$	$\frac{5,8}{9,7}$	$\frac{5,5}{0}$	$\frac{5,8}{11,8}$	$\frac{6,7}{13,8}$	$\frac{7,0}{14,9}$	$\frac{3,6}{15,5}$
$\frac{3,1}{21,0}$	$\frac{4,3}{18,4}$	$\frac{4,4}{17,9}$	$\frac{5,2}{16,7}$	$\frac{5,3}{16,6}$		$\frac{3,4}{17,4}$	$\frac{2,7}{18,1}$	$\frac{1,2}{19,8}$	$\frac{0,6}{20,4}$
						$\frac{2,7}{22,8}$	$\frac{2,4}{22,5}$		

68

No back slopes

67

No back slopes

66

No back slopes

65 4,62 1156,70

No back slopes on 7t $\frac{5,5}{0}$ $\frac{5,7}{9,8}$ $\frac{5,5}{11,6}$ $\frac{5,7}{11,5}$ $\frac{6,1}{12,2}$

$\frac{6,7}{12,9}$	$\frac{7,0}{14,7}$	$\frac{6,7}{14,9}$	$\frac{6,6}{13,4}$
--------------------	--------------------	--------------------	--------------------

64 2,47 1158,81

No back slopes on 7t $\frac{2,7}{17,0}$ $\frac{2,3}{10,0}$ $\frac{2,9}{11,0}$ $\frac{4,7}{14,8}$ $\frac{4,5}{15,2}$

$\frac{3,1}{17,4}$	$\frac{2,8}{17,5}$	$\frac{1,8}{19,2}$	$\frac{1,7}{19,5}$
--------------------	--------------------	--------------------	--------------------

$\frac{1.1}{20.8}$ $\frac{0.6}{21.7}$ $\frac{0.3}{23.3}$

63 4.77

1160.63

No back slope on it $\frac{5.1}{0}$ $\frac{5.2}{7.1}$ $\frac{4.9}{10.7}$ $\frac{5.3}{11.4}$ $\frac{6.0}{13.9}$

$\frac{6.7}{14.7}$ $\frac{6.4}{14.9}$ $\frac{5.1}{16.5}$ $\frac{4.9}{16.8}$

$\frac{5.7}{19.1}$ $\frac{3.3}{20.8}$

62

No back slope

61

No back slope

60

No back slope

59

No back slope

58

No back slope

57

No back slope

56

No back slope

55 4.66

1167.90

$\frac{6.0}{15.3}$ $\frac{6.4}{14.7}$ $\frac{5.7}{13.1}$ $\frac{5.2}{11.7}$ $\frac{5.1}{10.0}$ $\frac{5.0}{0}$ No back slope mt

$\frac{2.8}{22.3}$ $\frac{3.3}{20.7}$ $\frac{3.8}{19.9}$ $\frac{4.1}{18.8}$ $\frac{4.6}{17.3}$

54 4.44

1168.10

$\frac{6.3}{19.5}$	$\frac{5.7}{18.0}$	$\frac{5.1}{11.6}$	$\frac{4.2}{10.5}$	$\frac{5.0}{10.0}$	$\frac{5.0}{0}$	No back slope 17	
--------------------	--------------------	--------------------	--------------------	--------------------	-----------------	------------------	--

$\frac{3.7}{18.6}$	$\frac{4.1}{18.2}$	$\frac{4.3}{17.3}$	$\frac{5.0}{15.5}$	$\frac{5.8}{15.3}$
--------------------	--------------------	--------------------	--------------------	--------------------

$\frac{3.0}{20.4}$

53

No back slope

52

No back slope

51

No back slope

50 4.61

1167.91

$\frac{4.0}{18.7}$	$\frac{4.4}{16.5}$	$\frac{5.9}{14.5}$	$\frac{6.1}{13.7}$	$\frac{5.0}{11.0}$	$\frac{4.0}{0}$	$\frac{5.4}{9.3}$	$\frac{5.2}{10.7}$	$\frac{6.5}{13.0}$	$\frac{6.7}{13.7}$
--------------------	--------------------	--------------------	--------------------	--------------------	-----------------	-------------------	--------------------	--------------------	--------------------

$\frac{1.3}{23.6}$	$\frac{1.8}{22.4}$	$\frac{2.2}{22.2}$	$\frac{2.5}{21.3}$	$\frac{2.9}{21.1}$	$\frac{5.2}{15.8}$	$\frac{4.7}{16.0}$	$\frac{3.9}{19.2}$
--------------------	--------------------	--------------------	--------------------	--------------------	--------------------	--------------------	--------------------

49 6.17

1166.34

$\frac{8.1}{19.8}$	$\frac{8.4}{18.6}$	$\frac{8.3}{12.9}$	$\frac{6.7}{10.5}$	$\frac{6.8}{9.4}$	$\frac{6.5}{0}$	$\frac{7.2}{10.0}$	$\frac{8.7}{13.0}$	$\frac{8.2}{14.2}$	$\frac{5.0}{18.9}$
--------------------	--------------------	--------------------	--------------------	-------------------	-----------------	--------------------	--------------------	--------------------	--------------------

$\frac{4.7}{17.9}$	$\frac{5.0}{18.1}$	$\frac{5.4}{18.7}$	$\frac{5.6}{17.2}$	$\frac{6.5}{16.4}$	$\frac{4.7}{19.0}$	$\frac{4.6}{20.0}$
--------------------	--------------------	--------------------	--------------------	--------------------	--------------------	--------------------

$\frac{4.3}{21.2}$

48

No back slopes

47

No back slopes

46

No back slopes

45 3.45

No back slopes

44 5.5
5.45

1140,50

$\frac{7.4}{13.1}$	$\frac{6.4}{11.3}$	$\frac{5.9}{10.2}$	$\frac{6.1}{9.0}$	$\frac{6.0}{8}$	$\frac{6.5}{10.0}$	$\frac{6.4}{10.8}$	$\frac{6.7}{11.6}$	$\frac{7.7}{13.8}$
--------------------	--------------------	--------------------	-------------------	-----------------	--------------------	--------------------	--------------------	--------------------

$\frac{3.9}{19.8}$	$\frac{4.3}{19.1}$	$\frac{4.5}{18.3}$	$\frac{6.5}{14.6}$	$\frac{6.8}{14.2}$	$\frac{7.5}{14.3}$	$\frac{7.0}{15.0}$	$\frac{5.3}{17.8}$	$\frac{4.9}{19.2}$
--------------------	--------------------	--------------------	--------------------	--------------------	--------------------	--------------------	--------------------	--------------------

$\frac{1.2}{25.7}$	$\frac{2.1}{24.0}$	$\frac{2.6}{22.4}$	$\frac{2.9}{21.7}$	$\frac{3.3}{21.4}$
--------------------	--------------------	--------------------	--------------------	--------------------

43 7.48

1158,50

$\frac{9.5}{14.1}$	$\frac{8.8}{13.4}$	$\frac{8.3}{14.7}$	$\frac{8.0}{9.5}$	$\frac{8.2}{8.1}$	$\frac{8.0}{8}$	$\frac{8.5}{9.0}$	$\frac{8.1}{10.4}$	$\frac{8.4}{11.6}$	$\frac{8.8}{12.4}$
--------------------	--------------------	--------------------	-------------------	-------------------	-----------------	-------------------	--------------------	--------------------	--------------------

$\frac{4.1}{25.3}$	$\frac{5.0}{21.0}$	$\frac{6.2}{18.5}$	$\frac{6.5}{18.3}$	$\frac{9.1}{14.4}$	$\frac{9.3}{13.4}$	$\frac{9.4}{15.1}$	$\frac{7.8}{17.3}$	$\frac{6.8}{17.5}$
--------------------	--------------------	--------------------	--------------------	--------------------	--------------------	--------------------	--------------------	--------------------

$\frac{6.1}{19.2}$

42

No back slope

41

No back slope

40

No back slope

39 5.96

1159.22

$\frac{7.3}{13.2}$	$\frac{6.7}{11.8}$	$\frac{6.6}{9.2}$	$\frac{6.7}{0}$	$\frac{6.7}{10.7}$	$\frac{6.7}{11.4}$	$\frac{7.9}{17.4}$	
$\frac{4.2}{17.5}$	$\frac{4.4}{17.8}$	$\frac{5.0}{16.8}$	$\frac{5.3}{16.2}$	$\frac{6.9}{14.2}$	$\frac{5.6}{17.1}$	$\frac{5.1}{19.8}$	$\frac{4.8}{20.1}$
	$\frac{3.6}{20.7}$	$\frac{3.0}{20.6}$	$\frac{3.6}{19.2}$		$\frac{4.7}{23.0}$		

38 4.19

1158.00

Oct, 1, 1928 Cool Cloudy
D. Parks, C. Rand, F. Sphott

$\frac{3.2}{19.7}$	$\frac{4.1}{18.0}$	$\frac{6.5}{17.3}$	$\frac{6.8}{15.8}$	$\frac{5.3}{10.7}$	$\frac{5.2}{0}$	$\frac{4.5}{11.0}$	$\frac{6.1}{12.8}$	$\frac{6.7}{14.1}$	$\frac{6.8}{14.8}$
				$\frac{1.2}{15.4}$	$\frac{2.8}{20.9}$	$\frac{6.1}{15.4}$	$\frac{5.3}{16.5}$	$\frac{7.9}{16.8}$	$\frac{4.3}{17.6}$
						$\frac{3.5}{19.1}$	$\frac{3.2}{20.7}$		

37

No back slope

36

No back slope

35

No back slope

34 4,60

1155,00

$$\begin{array}{r} 4,6 \quad 6,5 \quad 6,6 \quad 6,9 \quad 5,4 \quad 5,2 \\ 17,9 \quad 14,7 \quad 14,2 \quad 14,1 \quad 11,2 \quad 8 \end{array}$$
 No back slopes etc.

$$\begin{array}{r} 3,0 \quad 5,4 \\ 20,5 \quad 20,1 \end{array}$$

33

No back slopes

32 6,07

1154,06

$$\begin{array}{r} 7,5 \quad 6,7 \quad 6,2 \quad 6,4 \quad 6,5 \quad 6,4 \quad 6,1 \quad 7,7 \quad 7,4 \\ 13,5 \quad 14,2 \quad 14,5 \quad 14,1 \quad 0 \quad 9,8 \quad 10,8 \quad 14,4 \quad 16,4 \end{array}$$

$$\begin{array}{r} 4,7 \quad 5,1 \quad 7,0 \quad 7,3 \\ 18,4 \quad 17,4 \quad 19,4 \quad 14,5 \end{array} \quad \begin{array}{r} 5,3 \quad 7,6 \quad 4,2 \quad 3,8 \\ 18,2 \quad 20,2 \quad 20,5 \quad 21,1 \end{array}$$

$$\begin{array}{r} 7,1 \quad 1,8 \quad 2,4 \quad 3,3 \quad 4,2 \\ 24,1 \quad 23,2 \quad 22,9 \quad 21,6 \quad 19,9 \end{array}$$

$$\begin{array}{r} 1,5 \quad 1,7 \\ 27,0 \quad 24,7 \end{array}$$

31,150 7,27

1152,90

$$\begin{array}{r} 5,8 \quad 8,7 \quad 7,5 \quad 7,6 \quad 7,7 \\ 18,5 \quad 14,2 \quad 11,4 \quad 10,1 \quad 0 \end{array} \quad \begin{array}{r} 8,2 \quad 8,0 \quad 8,7 \quad 8,5 \quad 8,3 \\ 10,2 \quad 10,8 \quad 15,0 \quad 13,6 \quad 14,4 \end{array}$$

$$\begin{array}{r} 8,4 \quad 8,6 \quad 9,0 \quad 4,8 \quad 5,4 \\ 24,5 \quad 24,5 \quad 22,6 \quad 20,7 \quad 19,7 \end{array} \quad \begin{array}{r} 7,8 \quad 8,2 \quad 8,3 \quad 7,9 \\ 16,3 \quad 17,2 \quad 19,3 \quad 20,1 \end{array}$$

$$\begin{array}{r} 7,5 \quad 7,3 \quad 6,7 \\ 21,2 \quad 22,6 \quad 20,0 \end{array}$$

No back slopes

31

30 5.11 1147.83

3.9	5.0	5.7	5.6	5.6	6.1	5.8	7.1	7.1
17.7	19.2	20.2	20.3	0	10.1	11.2	14.0	14.7
2.2	3.1	3.7	4.3		5.6	5.8	4.5	3.9
22.1	21.0	20.4	17.0		17.4	18.5	19.4	20.6
					4.7	3.6		
					25.2	20.8		

29 4.97 1142.84

6.9	6.2	6.5	6.0	6.2	5.8	6.4	7.9	7.5
14.8	11.0	9.8	0	9.5	10.1	11.1	13.9	17.4
5.9	6.4	6.8	8.3	8.0	6.9	6.6	5.7	5.5
18.4	18.8	17.5	15.6	14.6	15.2	15.4	16.8	17.8
5.4	5.3	5.4			5.0	4.7	5.8	
22.0	21.1	20.2			18.8	19.0	21.7	

28

No back slope

27

No back slope

26 6.11 1141.70

8.3	8.5	7.4	7.3	6.7	7.1	6.9	8.1	6.6
17.7	18.3	17.0	10.9	0	9.2	10.0	13.6	16.4
					5.5			
					19.1			

25 7.9 7.85 1145.67

10.1	9.3	9.0	8.7	8.4	9.0	11.5	10.0	9.7
13.8	12.3	11.5	10.4	0	10.4	13.8	13.2	15.6
5.4	6.2	8.6	9.6		9.1	8.4	8.0	6.9
22.1	21.6	10.1	14.6		16.8	17.7	18.0	20.3

24 7.31

1146.18

Oct. 2, 1928 Warm Cloudy
D. Parks, C. Rand, F. Sphott

23 5.10

1142.77

22

21

20

19 4.76

1136.31

8.1	8.6	8.8	7.4	7.7	7.5	7.2	7.7	9.5	8.6
14.4	14.8	13.5	8.8	8.5	0	9.2	11.4	13.1	10.4

4.1	4.2	4.8	6.1	6.6	7.2	5.3
25.0	22.5	20.4	16.8	16.5	17.4	21.2

6.2	7.0	5.1	5.6	5.5	5.9	5.8	7.1	5.2
15.7	14.5	10.4	9.1	0	11.7	12.2	16.2	17.1

2.1	2.8	4.3	5.0	5.9	4.6	3.9	3.0	2.4
22.5	21.8	17.8	17.3	16.0	18.2	19.6	20.4	22.4

1.1	1.7
25.1	24.3

No back slope

No back slope

No back slope

No back slope +

5.7	5.7	5.7	6.8	6.1	3.7
0	10.0	11.0	14.6	15.2	19.1

18 1.4
7.35 1136.75

5.8 4.8 4.4 4.8 4.6 4.7 4.3 5.8 3.9
12.7 10.1 8.9 7.5 8.0 9.5 10.3 14.7 17.8

3.9 3.8 2.9 2.6
19.6 15.7 19.3 20.8

17 5.29 1135.81

No back slope 7 5.8 6.1 5.9 7.4 7.3
9.9 11.0 14.7 15.6

15.2 5.1 4.8 4.1
19.0 19.4 19.7 20.8

16 7.63 1133.30

No back slope 1 8.1 8.1 7.8 9.5 9.3 8.8
9.4 9.5 14.0 14.7 14.8

7.7 7.4 5.2 5.1
16.3 16.6 20.7 22.8

15 3.68 1130.50

3.0 3.7 5.6 5.4 4.0 3.9 4.0 3.7 5.1 4.3 4.9
14.5 16.3 13.5 13.1 12.2 0 9.1 9.8 13.7 14.7 18.5

2.5 2.4 0.6 0.5
21.0 18.9 21.8 22.9

14 6.67 1127.50

9.0 9.5 7.1 7.7 7.3 7.4 6.8 9.1 8.5 7.2
15.1 13.8 10.5 9.1 0 7.8 8.8 13.8 14.7 16.6

6.6 7.5 6.8 6.2 5.9 4.5
17.1 17.6 16.9 18.2 19.5 21.2

13

No back slopes

12

No back slopes

11
10 5.32 1125.34

No back slopes
$$\begin{array}{r} 9.3 \\ 20.3 \end{array} \begin{array}{r} 8.0 \\ 15.4 \end{array} \begin{array}{r} 6.6 \\ 11.4 \end{array} \begin{array}{r} 6.1 \\ 11.1 \end{array} \begin{array}{r} 6.0 \\ 0 \end{array} \begin{array}{r} 6.1 \\ 10.2 \end{array} \begin{array}{r} 7.3 \\ 13.0 \end{array} \begin{array}{r} 7.1 \\ 13.7 \end{array} \begin{array}{r} 6.5 \\ 14.0 \end{array} \begin{array}{r} 3.9 \\ 17.8 \end{array}$$

$$\begin{array}{r} 3.2 \\ 21.8 \end{array} \begin{array}{r} 8.8 \\ 21.3 \end{array} \begin{array}{r} 3.1 \\ 20.3 \end{array}$$

9
8 4.72 1125.16

No back slopes
$$\begin{array}{r} 4.8 \\ 16.4 \end{array} \begin{array}{r} 5.3 \\ 16.7 \end{array} \begin{array}{r} 6.5 \\ 13.5 \end{array} \begin{array}{r} 4.7 \\ 10.2 \end{array} \begin{array}{r} 4.9 \\ 9.6 \end{array} \begin{array}{r} 4.6 \\ 0 \end{array} \begin{array}{r} 3.8 \\ 13.8 \end{array}$$

7 5.34 1124.45

No back slope
$$\begin{array}{r} 8.2 \\ 15.2 \end{array} \begin{array}{r} 8.7 \\ 14.0 \end{array} \begin{array}{r} 5.9 \\ 10.5 \end{array} \begin{array}{r} 6.0 \\ 8.7 \end{array} \begin{array}{r} 5.9 \\ 0 \end{array}$$

$$\begin{array}{r} 4.3 \\ 20.5 \end{array} \begin{array}{r} 4.9 \\ 18.8 \end{array} \begin{array}{r} 5.3 \\ 12.5 \end{array}$$

6 5.50 1121.84

No back slope
$$\begin{array}{r} 7.6 \\ 14.2 \end{array} \begin{array}{r} 8.2 \\ 13.4 \end{array} \begin{array}{r} 6.5 \\ 10.6 \end{array} \begin{array}{r} 5.8 \\ 9.2 \end{array} \begin{array}{r} 6.2 \\ 8.2 \end{array} \begin{array}{r} 6.2 \\ 0 \end{array}$$

$$\begin{array}{r} 3.5 \\ 22.0 \end{array} \begin{array}{r} 3.6 \\ 19.6 \end{array} \begin{array}{r} 4.2 \\ 19.3 \end{array}$$

5 9.88 1117.45

$$\begin{array}{r} 9.8 \\ 17.3 \end{array} \begin{array}{r} 12.1 \\ 14.1 \end{array} \begin{array}{r} 11.9 \\ 13.7 \end{array} \begin{array}{r} 10.2 \\ 10.5 \end{array} \begin{array}{r} 9.8 \\ 0 \end{array}$$

$$\begin{array}{r} 7.9 \\ 21.3 \end{array} \begin{array}{r} 7.6 \\ 20.5 \end{array} \begin{array}{r} 7.9 \\ 19.6 \end{array}$$

4

No back slopes

3

No back slopes

2

4.02

1111.50

$$\begin{array}{r} 5.2 \quad 5.5 \quad 5.9 \quad 5.6 \quad 5.0 \quad 4.7 \\ 15.0 \quad 14.1 \quad 13.9 \quad 13.3 \quad 11.5 \quad 0 \end{array}$$

No back slope

1

4.30

1111.20

$$\begin{array}{r} 5.4 \quad 5.0 \quad 4.8 \quad 5.3 \quad 4.1 \quad 4.8 \\ 11.9 \quad 11.7 \quad 10.6 \quad 9.3 \quad 8.1 \quad 0 \end{array}$$

$$\begin{array}{r} 3.4 \quad 5.3 \quad 5.7 \\ 19.0 \quad 13.9 \quad 13.2 \end{array}$$

Profile of ²⁵⁶⁺¹⁵ South
sub-grade

+ H. I. - E. I. Grade.

B.M., 2.02 1259.93 1257.91

256+15.5 7.81 1252.12 1252.45

256 7.31 1252.62 1252.93

255+50 6.73 1253.20 1253.72

255 7.21 1252.72 1253.38

254 10.77 1249.16 1249.85

T.P. 1.61 1249.78 12.76 1247.17

253 3.47 1246.31 1246.65

252 4.94 1244.84 1245.25

251 5.70 1244.08 1244.75

250 5.90 1243.88 1244.25

B.M. 3.30 1246.48

249 0.79 1247.31 1246.52

248 4.87 1242.94 1243.75

247 5.00 1242.31 1243.03

247+75 4.45 1242.86 1242.46

247 7.40 1239.91 1240.78

246 11.34 1235.97 1237.00

T.P. 4.49 1239.45 12.35 1234.96

245 6.65 1232.80 1233.44

244 6.84 1232.61 1232.94

243 4.62 1234.83 1235.5

242 2.07 1237.38 1238.5

T.P. 4.81 1243.73 0.53 1238.92

May 11, 1929 cloudy
Warrick
Sun out
about 11 o'clock

D. Parks 17
F. Gray

20" Apple, L. 255+60

B.M. L. 250+30

1243.73

241		4.35	1239.38	1239.93
240		4.17	1239.56	1239.78
239		4.43	1239.30	1239.64
B.M.		5.10	1238.63	
Record	2.91	1241.53	1238.62	
238		3.28	1238.25	
237		5.26	1236.27	
236		8.48	1233.05	
235		9.96	1231.57	
T.P.	4.94	1236.54	9.93	1231.60
234		5.34	1231.2	
233		4.23	31.9	
232		4.54	32.0	
231		5.94	30.6	
230		9.28	27.2	
229		11.16	25.3	
T.P.	7.98	1233.89	10.63	1225.91
228		8.92	25.0	
227		7.44	26.5	
226		5.10	28.8	
225		3.76	30.1	
224		2.92	31.0	
B.M.		5.35	1230.54	
Record	3.35	1233.94	1230.59	
T.P.	4.48	1236.86	1.56	1232.38

3' Elm 25' Left Sta. 238+70

Sta. 224+35

1236.86.

223		4.50	32.4
222		3.97	32.9
221		3.93	33.0
220		5.08	31.8
219		6.01	30.9
218		7.02	29.9
217		6.78	30.1
B.M.		1.91	1234.94 ✓
record	1.68	1236.59 ✓	1234.91 ✓
216		6.45	30.1
215		6.55	30.0
214		7.31	29.3
213		7.98	28.6
212		7.72	28.9
T.P.	3.93	1231.70 ✓	8.82 1227.77 ✓
211		2.93	28.8
210		4.58	27.1
209		6.37	25.3
208		9.30	22.4
207		11.23	20.5
T.P.	5.17	1224.12 ✓	1218.75 ✓
206		4.27	19.8
205		4.24	19.9
204		2.75	21.4
203		1.54	22.6

B.M. - Left, 216 + 45 (rec. 1234.91)

✓
1224.12

202
B.M.
record

0.97 23.1 ✓
1.14 1222.98
 1222.97

B.M. right, 202 + 20 (rec. 1222.97)

B.M.	3.68	1226.65		1222.97
201			4.4	22.3
200			6.3	20.4
199			9.3	1217.4
198			10.9	15.8
197			9.4	17.3
196			5.0	21.7
T.P.	12.77	1235.69	3.73	1222.92
195			8.5	1227.2
194+25			5.5	30.2
194			5.2	30.5
193			4.7	31.0
192			5.5	30.2
191			4.4	29.3
190			7.4	28.3
189			8.6	27.1
188			9.9	25.8
T.P.	5.91	1231.13	10.47	1225.22
B.M.			2.99	1228.14
Record	2.99	1231.09		1228.10
187			8.9	22.2
188			13.3	17.8
T.P.	9.10	1228.05	12.14	1218.95
185			10.4	17.7
184			7.9	20.2

Cloudy
May 13, 1929 Warm

D. Parks
F. Gran.

21

B.M. Right of 202+20

B.M. Right sta 187+80

1228.05

183		3.6	24.5
182		1.7	26.4
181		5.0	23.1
180		11.4	16.7
T.P.	11.28	1227.27	12.06.1215.99
179		13.8	13.5
178		13.2	14.1
177		8.2	19.1
176		4.3	23.0
175		2.0	25.3
174		0.7	26.6
T.P.	4.70	1230.92	1.05.1226.22
B.M.		4.13	1226.79
record	1.45	1228.20	1226.75
173		2.6	25.6
172		8.1	20.1
171		12.6	15.6
T.P.	7.72	1224.17	11.75.1216.45
170		10.3	13.9
169		9.1	15.1
168		5.5	18.7
167		2.2	22.0
T.P.	12.09	1235.98	0.28.1223.89
166		11.0	25.0
165		6.4	29.6

B.M. 30' Right Sta 173+10

1235,98

164			1.0	35.0
T.P.	7.75	1242.96	0.77	1235.21
B.M.			2.30	1240.66
record	2.30	1242.94		1240.64
163			9.8	33.2
T.P.	0.90	1230.81	13.03	1229.91
162			3.5	27.3
161			6.0	24.8
160			6.6	24.2
159			6.1	24.7
158			5.3	25.5
T.P.	12.37	1237.63	5.55	1225.26
157			9.6	28.0
156			5.2	32.4
155			4.0	33.6
154			5.0	32.6
153			4.3	33.3
152			3.1	34.5
151			1.5	36.1
T.P.	12.14	1248.56	1.21	1236.42
150			9.1	39.5
149			6.4	42.2
148			4.9	43.7
B.M.			2.77	1245.79
Record				1245.83

B.M. ref. nail E. side trunk 164+20

B.M. 20' right sta 147+70

May 17, 1929 Clear
Warm
50°

D. Parks 29
F. Gray,

B.M.	1.77	1241.33	1259.56
122+24.0		7.4	53.9
123		8.1	53.2
124		10.7	50.6
125		11.6	49.7
126		11.3	50.0
T.P.	5.85	1255.86	1250.01
127		4.3	51.6
128		3.9	52.0
129		4.2	51.7
130		4.8	51.1
131		5.1	50.8
131+50		6.0	49.9
132		7.2	48.7
132+50		8.7	47.2
133		11.1	44.8
T.P.	5.03	1248.53	1243.60
133+50		5.7	42.8
134		6.9	41.6
134+50		7.7	40.8
135		7.9	40.6
135+50		7.4	41.1
136		6.0	42.5
136+50		4.7	43.8
137		4.2	44.3

B.M. x on S.W. cor. porch.

1248,53

137+50		6,1	42,4
B.M.		4,27	1244,26
Record	4,27	1248,44	1244,17
138		8,8	39,6
138+50		11,6	36,8
T.P.	1,50	1237,15	12,79
139		3,4	33,8
139+50		5,6	31,6
140		7,2	30,0
140+50		7,7	29,5
141		7,3	29,9
141+50		5,0	32,2
142		2,2	35,0
T.P.	9,21	1246,31	0,05
142+50		8,5	37,8
143		6,7	40,1
143+70		4,4	41,9
144		4,4	41,9
144+40		5,4	40,9
145		7,5	38,8
146		8,3	38,0
147		5,5	40,8
147+50		2,6	43,7
B.M.		0,95	1245,86
Record	2,56	1248,39	1245,83

B.M. 30' RT sta. 137+70

B.M. 25' RT Sta. 147+75

1248,39

148		4,5	43,9	
149		4,1	42,3	
150		8,8	39,5	
151		12,2	36,2	
T.P.	2,61	1238,28	12,72	1235,67
152		3,7		
153		4,9		
154		5,6		
155		4,5		
155+150		4,6	33,7	
156		5,5		
156+150		7,9		
157		10,2		
T.P.		10,24	1228,04	

Large flat stone 2' from 24" Maple at 157+26

W. C. Marks 27
D. Parks
F. Gray

May, 17, 1929

B.M. 0.79 1241.43 1240.64

164	4.6	34.8
164+25	7.5	33.9
164+50	9.1	32.3
164+75	10.6	30.8
165	11.9	29.5

163+75	6.1	35.3
163+50	6.2	35.2
163+25	6.9	34.5
163	8.1	33.3
162+75	9.7	31.7
162+50	11.2	30.2
162+25	12.7	28.7

1.19 1230.67 11.96 1229.48

162	3.3	27.4
161+75	4.4	26.3
161+50	4.9	25.8
161+25	5.5	25.2
161	5.9	24.8

East Side trunk

May 17, 1929

W.C. Marks 28
D. Parks
F. Gray

B.M.	1.35	1228.10	1226.75
173		2.6	25.5
172+75		3.5	24.6
172+50		4.7	23.4
172+25		6.2	21.9
172		7.9	20.2
171+75		9.2	18.9
171+50		10.4	17.7
171+25		11.7	16.4
171		12.5	15.6
173+50		1.7	26.4
174		1.5	26.6
174+50		1.8	26.3
175		2.8	25.3
175+50		3.6	24.5
176		5.3	22.8
176+50		7.0	21.1
177		9.0	19.1
T.P.	2.97	1221.68	1218.71
177+50		5.4	16.3
178		7.5	14.2
178+50		8.6	13.1
179		8.2	13.5
179+50		6.8	14.9

B.M. West foot Herkbeck 40' ft 173+05

1221.68

180		5.1	16.6
180+50		2.1	19.6
T.P.	11.25	1230.90	2.03 1219.65
181		8.2	22.7
181+50		5.9	25.0
182		4.5	26.4
182+50		5.4	25.5
183		6.5	24.4
183+50		8.9	22.0
184		10.6	20.3
184+50		12.2	18.7
		2.79	1228.11
			1228.10

B. M. 40' Pt 187+80

Finish Grades, stakes

D. Parks 30
F. Graw
E. Belding

May 22, 1929
Su 17
Wa 17
5 5 5

B.M., 1.01	1260.57	1259.56	
123		1253.7	
124		1251.7	
125		1250.5	
126		1250.8	

6.76 1256.79 10.54 1250.03

127		1252.25	
128		1252.75	
129		1252.25	
130		1251.75	
131		1251.25	
131+50		1250.6	
132		1249.0	

1.36 1248.15 10.00 1246.79

133		1245.0	
134		1242.1	
135		1241.5	
136		1243.2	
136+50		1244.6	
137		1244.9	
137+50		1243.0	

B.M., 3.89 1244.26

X on S.W. Cor. Store Porch

6.87		
8.87		stake on RT 9.37
10.07		stake on Lt. 10.57
9.77		

4.54

4.04

4.54

5.04

5.54

6.19

7.79

5.15

6.05

6.65

4.95

3.55

3.25

5.15

stake on Lt
7.15

B.M., 30 RT 137+70

Finish Grade stakes

B.M.	2.02	1259.93	1257.91
256			1252.95
255			1253.72
254			1253.38
254			1251.90
254			1249.66
253	2.15	1249.17	12.91 1247.02
252			1246.81
251			1245.25
250			1244.75
B.M.		2.68	1246.49
249	0.55	1247.07	1246.02
248			1243.44
247			1243.29
246			1242.81
245			1242.46
244			1240.41
243			1239.10
242			1236.47
241	6.00	1240.46	12.61 1234.46
240			1235.0
239			1233.44
238			1232.94
237			1235.5

SUM
 Warm Wind
 May 23, 1929 Cloudy at 3.30

D. Parks 31
 F. Grau
 E. Bedding

7.00
 6.21
 6.55
 8.03
 10.27

stake on ht
 10.77

2.36
 3.82
 4.42
 4.92

3.63
 3.78
 4.26
 4.61
 6.66
 8.07
 10.60

stake on ht
 11.10

5.46
 7.02
 7.52
 4.96

Finish Grade stakes

	1240.46			1238.5
242				
	7.67	1244.47	0.66	1239.80
241				1239.93
240				1239.78
239				1239.64
238				1238.86
B.M.		5.87		1238.60
record	3.32	1241.74		1238.62
237				1236.8
236				1233.55
235				1232.2
234				1231.7
	5.08	1236.40	10.62	1231.32
233				1232.4
232				1232.5
231+50				1231.8
231				1251.1
230+58				1229.55
230				1228.0
229				1226.1
	9.04	1235.05	10.39	1226.01
228				1225.5
227				1227.05
226				1229.25
225				1230.80

1.96

May 24, 1929 cloudy Warm
Sun out at 1:00
D. Parks
F. Gray
E. Holding

4.54

4.69

4.83

5.61

B.M. 25' Left sta. 238+70

5.14

8.37

9.74

10.24

4.00

3.90

4.60

5.30

6.85

8.40

10.30

9.55

8.00

5.80

4.25

Finish Grade Stakes

1235.05

R24

1231.5

3.55

223

1233.0

2.05

BM

4.45 1230.60

BM, 30' left of Sta 224+35

record

1230.59

Finish Grade Stakes

B.M.	7.12	1237.71		1230.59
222				1233.5
221				1233.0
220				1232.0
219				1231.0
218				1230.2
	7.88	1236.66	8.93	1228.78
217				1230.7
B.M.		1.73		1234.93
record				1234.91

May 25 1929

Sun
Warm

D. Parks
F. Grau
E. Belding

34

B.M. 30' Left sta. 224+35

4.21
4.71
5.71
6.71
7.51

5.96

B.M. 35' Left sta. 216+45

Finish Grade stakes

D. Parks 35

SUM F. Gray
 WARTH E. Bolding
 71°

May 27, 1929

B.M.	2.22	1237.13		1234.91
216				1230.7
215				1230.6
214				1229.8
213				1229.2
	4.42	1233.01	8.54	1228.59
212				1229.6
211				1229.6
210+50				1228.6
210				1227.7
209				1226.0
208				1223.0
207				1220.3
	6.74	1227.17	12.58	1220.43
206				1220.0
205				1220.4
204				1221.9
203				1223.0
B.M.	3.25	1226.22	4.20	1222.97
202				1223.8
201				1222.8
200				1220.8
199				1217.1
			10.77	1215.45

B.M. 35' Left Sta. 216+45

6.43
6.53
7.33
7.73
3.41
3.41
4.41
5.31
7.01
10.01
12.71
7.17
6.77
5.27
4.17

B.M. 30' RT Sta. 202+20 (record 1222.97)

X - N.W. Corner W Headwall

Finish Grade stakes

SUN

Warm

75°

P. Parks

F. Gray

F. Beiding

36

May 28, 1929

10.15 1225.60 1215.45

198+50 1216.0
 198 1215.8
 197 1218.1
 196 1222.2

11.08 1236.05 0.63 1224.97

195 1228.0
 194 1231.0
 193 1231.5
 192 1230.7
 191 1229.8

3.44 1231.96 7.53 1228.52

190 1228.8
 189 1227.6
 188 1226.3

B.M. 3.88 1228.08

record 3.88 1231.98 1228.10

187 1222.7

9.70 1229.66 12.22 1219.76

186 1218.3

185 1217.8

184 1220.1

183 1225.0

182 1226.9

11.11 1218.35

X N.W. corner West Headwall

9.60

9.80

7.50

3.40

8.05

5.05

4.55

5.35

6.25

3.16

4.36

5.66

B.M. 40' Pt. Sta 187+80

9.28

11.16

11.66

9.36

4.46

8.56

Finish Grade Stakes

May 29 1929

Sun
Hot

D. Parks 37
F. Gray
E. Belding

5.96 1224.31 1218.35

181			1223.3	1.01
180-			1217.2	7.11
179			1214.2	10.11
178			1214.7	9.61
177			1219.3	5.01
176			1223.5	0.81

7.40 1231.53 0.18 1224.13

175			1225.8	5.73
174			1227.1	4.43

B. M. 4.71 1226.82

B. M. 35' Rt. Sta. 173+10

4.71 1231.44 1226.75

173			1226.1	5.36
172			1221.9	9.56

1.75 1220.57 12.64 1218.82

171			1216.9	3.67
170			1214.5	6.07
169			1215.2	5.37
168			1218.7	1.87

12.71 1232.36 0.92 1219.65

167			1222.5	9.86
166			1225.5	6.86
165			1230.2	2.16

10.24 1242.14 0.46 1231.90

Finish Grade Stakes

1242.H

164

163+65

B.M.

Record

1.50 1240.64

1240.64

1235.4

1236.7

6.74

5.44

B.M. Ref. Nail E. Side trunk 30' Lt.

Sta 16++20

Finish Grade Stakes

B.M. 154	1242.18		1240.64
163			1233.1
0.86	1230.19	12.85	1229.33
162			1227.9
161+50			1226.2
161			1225.3
160			1224.7
159			1225.2
158			1226.0
10.38	1236.35	4.22	1225.97
157+50			1227.0
157			1228.50
156			1232.9
155+58			1234.2
155			1234.1
154			1233.1
10.03	1242.97	3.41	1232.94
153			1233.8
152+50			1234.5
152			1235.1
151			1236.6
150			1240.0
149			1242.80
6.12	1248.66	0.43	1242.54

Warren
May 31, 1929
Wing
758

D. Parks 39
F. Gray
E. Belding

B.M. Ref. Nail E side trunk 30' + sta. -
9.08 -164+20

2.29
3.99
4.89
5.49
4.99
4.19
9.35
7.85
3.45
2.15
2.25
3.25
9.17
8.47
7.87
6.37
2.97
0.17

Finish Grade stakes

1248.66

148

B.M.
record.

2.84 1245.82

1245.83

1244.4

4.26

B.M. 25' PT. 147+70

Finish Grade Stakes

B.M.	1.39	1247.22		1245.83
147				1241.3
146				1238.5
145+50				1238.7
145				1239.3
144+40				1241.45
144	4.26	1245.95	5.53	1241.69
143+78				1242.4
143				1242.4
142+50				1240.6
142				1238.3
				1235.5
	3.13	1238.22	12.86	1233.09
141+50				1232.5
141				1230.4
140+50				1229.9
140				1230.2
139				1234.0
	12.36	1247.97	0.61	1235.61
138				1240.0
B.M.		3.82		1244.15
record				1244.17

June 1, 1929

Cool
Cloudy
52°

L. Parks 41
F. Gray
E. Belding

B.M.	25' RT.	Sta.	147+70
			5.92
			8.72
			8.52
			7.92
			5.77
			3.55
			3.55
			5.35
			7.65
			10.45
			3.72
			5.82
			6.32
			6.02
			2.22
			7.97
B.M.	25' RT.	Sta.	137+70

170	170	.42
550	720	1.80
900	1620	4.00
1160	2780	
<u>2050</u>	<u>4830</u>	

$$\begin{array}{r} 2.7 \\ 760 \\ \hline 1620 \\ 189 \\ \hline 2052.0 \end{array}$$

$$\begin{array}{r} 430 \overline{) 1160.0} \quad 2.7 \\ \underline{860} \\ 3000 \\ \underline{3010} \end{array}$$

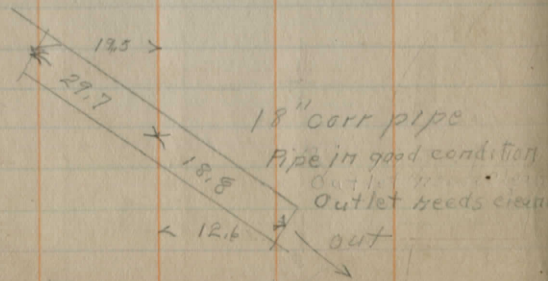
40

FACINGER ROAD,
HUNTSBURG,

Facinger Road (Clay St)

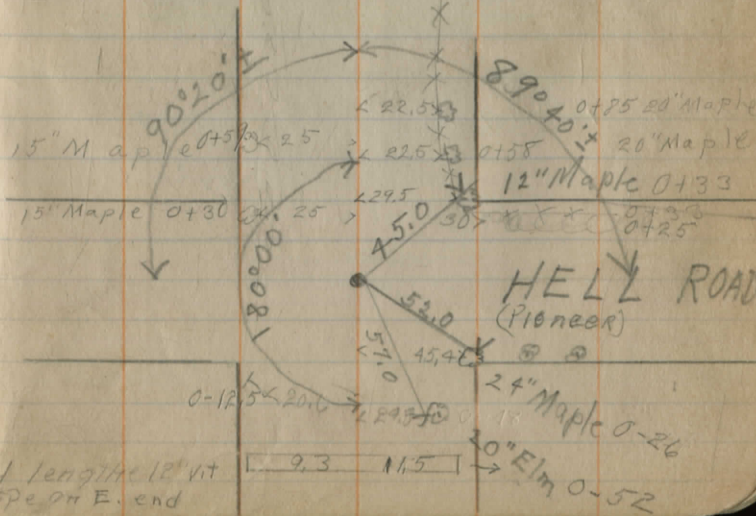
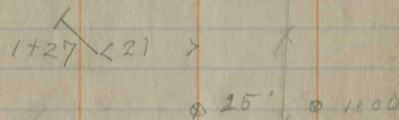
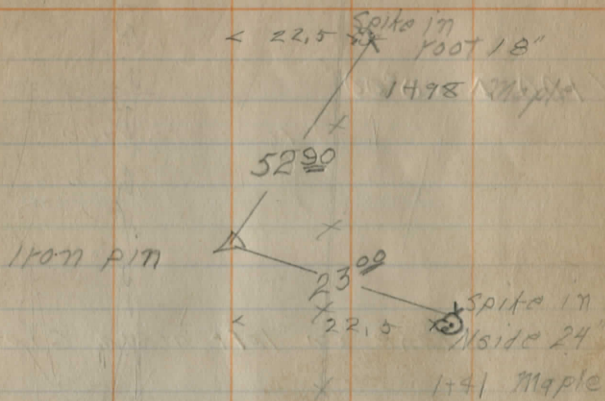
T.H. 119 Section B

1+50 $\Delta = 0^{\circ}00'$



12" cast iron pipe culvert +
stones played around pipe at each

May 13, 1930 Fair 75° Marks Rand Goodrich. 45



1 length 18" vit
pipe on E. end

10+98 10" v.t pipe

8+19 Old stone culvert 1x1 stones fallen
in ditch on both ends

1218E 10" cherry ~~OK~~ 16

12139 10" cherry ~~OK~~ 18.5

12114 12" Apple ~~OK~~ 30

11162 12" Apple ~~OK~~ 45

11140 20" Apple ~~OK~~ 45

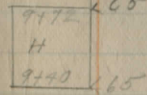
10167 18" Apple ~~OK~~ 25

10152 14

10145 17

9190 17

9186 30" Maple ~~OK~~ 25



9109 11" Maple ~~OK~~ 20

8193 10

8170 20" Maple ~~OK~~ 33.5

12128 18" Maple

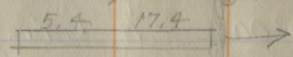
12100

11168 15" cherry

11146 36" cherry

11123 20" cherry

11100



10480 10" cherry

10155 10" cherry

10135 18" cherry

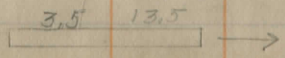
10100

9189 15" Maple

9157 12" Maple

9100

8193



9100 25

May 23 1930
 side stakes
 Fair Warm West Wind

D. Parks
 L. Ernst
 H. Quiggle

16+00 $\Delta = 0^{\circ}00'$ $\frac{1}{4}$ " I. Pin. fd 3-28-61
 6" under

15+05.2 8" corr. pipe

17+75.24 Maple 23
 17+15 56
 H 17+89
 16+82 54

18.5
 x 25
 17+28
 17+00

16+61.8 Elm 19

USE for BM

SPike

16+28 20.5
 Maple

SPK NE side
 CER

16+20 188
 12" cherry

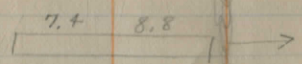
15+93
 SPike 20.5

17 SE side

Doub. 12" 1600st

15+78 14

15+20 19



x 25 15+00

x 28.5 19+70 15" cherry

x 25 19+00

L 31 13+55 8" cherry

L 29 13+24 10" Maple

13+21 15.3

13+22 12.5

13+00 19.5

x 25 13+00

Topography

Cool Wind

May 24 1930

D. Parks

L. Ernst

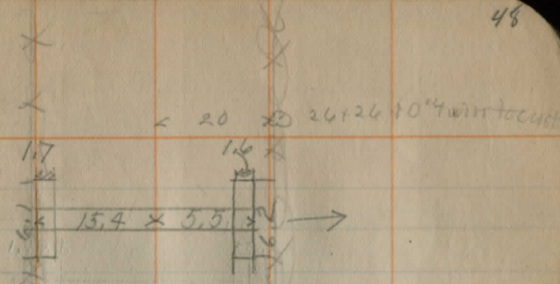
23+0.75 12" Cast iron pipe

22+74.5 18" Corr. pipe

23496 20" Elm X 23 < 20.5 X 23482 16" cherry
 23477 15" popridge X 33 < 20.5 X 23477 12" cherry
 23400 10" Apple X 33.5 < 15.5 X 23438
 < 2.0 X 23427 15" cherry
 23411 X X < 32.5 X 14 X 23411
 16.7 3.6
 X 25 X 23400
 12.9 9.1
 22130 12" cherry X 23 < X
 X 25 X 22700
 21490 X 20 < X
 < 13 X X X 21479
 X 25 X 21100
 < 16.5 X 20478
 X 10 X 20436
 X 25 X 20400
 19464 18" Maple X 25 < X
 17437 242 X
 Shed 17401 X 25 < X
 17405 < 78 X 25 X 17400
 18499 24" Maple X 23.5 < X
 18465 18" Maple X 23.5 < X
 18432 24" Maple X 23 < 17.5 X 18438
 X 25 X 18400

26+17.5 24x3 stone slab
 first row of stone sets in .3 on N side
 .4 on S side, plank form boards for
 new concrete slab on top starting 3.5 ft. from E. end
 and running to west end of side wall stone used rebar
 26+00 Δ=0°00

Topography
 Contouring

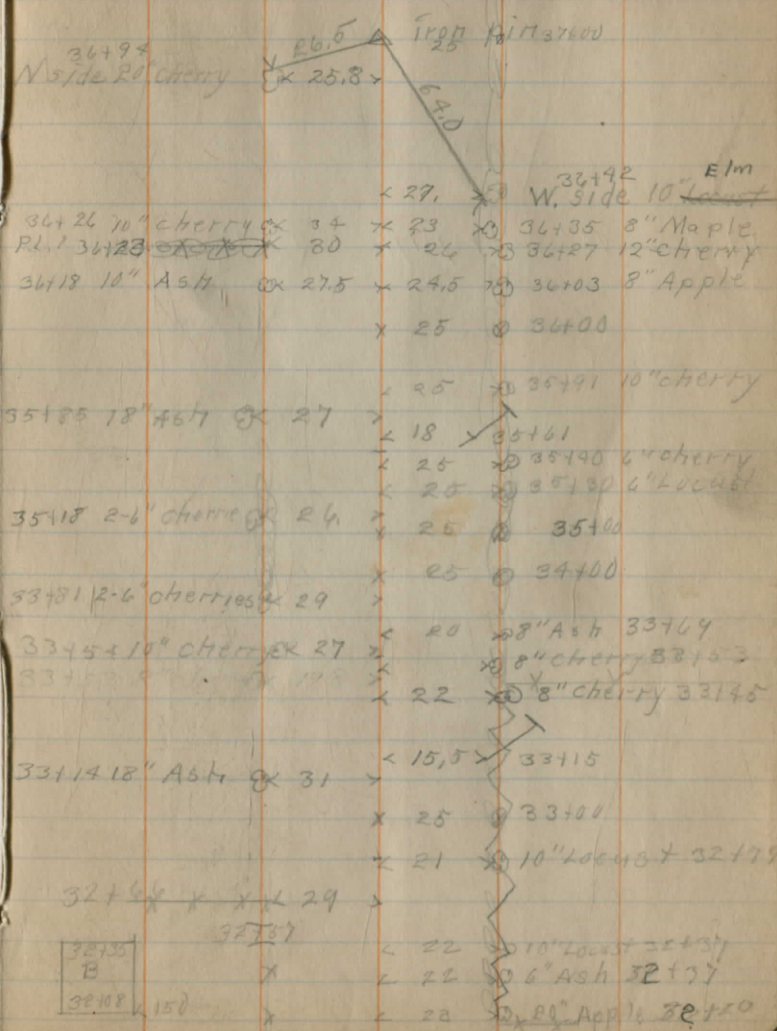


- 26+24 N.E. side 10" Ash
- 26+24 2 Locust
- 26+08 twin 10" Ash
- 25+99 8" Locust
- 25+80 15" Locust
- 25+79 8" Ash
- 25+70 S.E. side 8" Elm
- 25+98 10" Locust
- 25+28 10" Maple
- 25+19 4 8" Maples
- 25+06 10" Locust
- 24+94 15" cherry
- 24+76 10" Ash
- 24+60 10" Maple
- 26+26 10° 9 min to cut
- 25+95 20" Elm
- 25+95 20" Elm
- 25+77 20" Elm
- 25+67 6" Maple
- 25+35 10" Apple
- 25+26 8" Ash
- 25+08 8" Ash
- 25+00
- 24+35 cherry
- 24+19 6" Elm
- 24+08 20" Maple
- 24+00

R

32129 8" Ash ~~OK~~ 28 >
 32105 8" Ash ~~OK~~ 29 >
 31195 8" Ash ~~OK~~ 29 > 19 X 31188 8" Apple
 30191 6" Locust ~~OK~~ 25 > X 25 31100
 30153 15" Locust ~~OK~~ 30 > X 15.6 30170
 30107 6" Locust ~~OK~~ 20 > X 25 30100
 29183 8" Locust ~~OK~~ 32 >
 29173 8" Locust ~~OK~~ 29.5 >
 29149 6" Locust ~~OK~~ 20 > X 10.4 29162 10" Locust
 29147 6" Locust ~~OK~~ 20.5 >
 29144 10" Locust ~~OK~~ 30 > X 20.5 29144 10" dead cherry
 29113 8" Locust ~~OK~~ 18.5 >
 29100 6" Locust ~~OK~~ 30 > X 25 29100
 28198 8" Locust ~~OK~~ 31 > X 20.5 28170 10" cherry
 28161 18" Locust ~~OK~~ 30 > X 20.5 28180 8" cherry
 28146 10" Locust ~~OK~~ 33 > X 15.5 28122.5
 28116.5 12" Locust ~~OK~~ 33 > X 25 28100
 27194 10" cherry ~~OK~~ 33 >
 27191 8" Locust ~~OK~~ 34 > X 20 27155 6" Locust
 27110 12" Ash ~~OK~~ 34 > X 20 27120 3-6" Locusts
 27102 8" Locust ~~OK~~ 20 > X 20 27100 15" Locust
 26184 15" Locust ~~OK~~ 20 > X 20 26184 15" Locust
 26183 10" Ash ~~OK~~ 22 > X 20 26167 2 6" Locust
 26165 15" Locust ~~OK~~ 33 > X 20 26154 8" Locust

37100 A=0°00'



41+84 16" corr pipe good conditum

- < 25 X 42491 12" Locus
- < 26 X 42177 75" Locus
- < 25 X 42+70 12" Locus
- < 25 X 42+52 10" Locus
- < 2.5 X 42139 8" Apple
- X 25 @ 42100
- < 26.5 X 41491 20" Locus
- 8.3 7.9 outlet ditch needs
→ opening for 150"?
- < 28. X 41452 18" Locus
- X 25 @ 11100
- < 24 X 40498 6" Locus
- < 25.5 X 40475 36" Locus
- < 15 X 40469
- < 25.5 X 40459 6" Locus
- < 29 X 40449 6" Locus
- < 25.5 X 40429 15" Locus
- X 25 @ 40100
- < 28.5 X 39495 6" Locus
- < 20 X 39148 18" Locus
- X 25 @ 39
- < 22 X 38498 8" Apple
- < 25.5 X 38156 18" Apple
- < 15.5 X 38107
- X 25 @ 38100
- < 25 X 37496 8" Cherry
- < 25.5 X 37434 8" Maple
- < 26 X 37410 8" Cherry

47111, 47112

47113, 47114

46119 15" Maple \times 34.5 \times 46115 36" Locus \times 33 \times

\angle 35 \checkmark 48+22
 \angle 55 \circledR 48+10 10" Apple
 \times 25 \circ 48+00
 \times 36 \checkmark 47+23
 \angle 25 \circledR 47+31 6" Locus
 \times 25 \circ 47+00
 \angle 26 \circledR 46+27 6" cherry
 \angle 26.5 \circledR 46+22 18" Locus

 \times 25 \circ 46+0045195 10" Ash \times 28.5 \times

\angle 15 \times 45+08
 \angle 23.6 \circledR 45+61 12" Locus
 \times 25 \times 45+08
 \times 25 \circ 44+00
 \angle 22.5 \circledR 43+84 6" Ash
 \angle 22.5 \circledR 43+81 8" Ash
 \angle 26.7 \circledR 43+91 8" Locus
 \angle 24.6 \circledR 43+82 2-6" Locus
 \angle 25.5 \circledR 43+25 6" Locus
 \angle 26 \circledR 43+23 12" Ash
 \angle 15.5 \checkmark 43+13
 \times 25 \circ 43+00

B.M. 5.14 1250.87 ✓ 124573 ✓

48144.1
 48145.1
 48146.1
 48147.1
 48148.1
 48149.1
 48150.1
 48151.1
 48152.1
 48153.1
 48154.1
 48155.1
 48156.1
 48157.1
 48158.1
 48159.1
 48160.1
 48161.1
 48162.1
 48163.1
 48164.1
 48165.1
 48166.1
 48167.1
 48168.1
 48169.1
 48170.1
 48171.1
 48172.1
 48173.1
 48174.1
 48175.1
 48176.1
 48177.1
 48178.1
 48179.1
 48180.1
 48181.1
 48182.1
 48183.1
 48184.1
 48185.1
 48186.1
 48187.1
 48188.1
 48189.1
 48190.1
 48191.1
 48192.1
 48193.1
 48194.1
 48195.1
 48196.1
 48197.1
 48198.1
 48199.1
 48200.1

B.M. 4.43 1250.16 ✓ 124573 ✓

48141
 48142
 48143
 48144
 48145
 48146
 48147
 48148
 48149
 48150
 48151
 48152
 48153
 48154
 48155
 48156
 48157
 48158
 48159
 48160
 48161
 48162
 48163
 48164
 48165
 48166
 48167
 48168
 48169
 48170
 48171
 48172
 48173
 48174
 48175
 48176
 48177
 48178
 48179
 48180
 48181
 48182
 48183
 48184
 48185
 48186
 48187
 48188
 48189
 48190
 48191
 48192
 48193
 48194
 48195
 48196
 48197
 48198
 48199
 48200

Large Headed Nail 5 root 36" poplar 48
 14, Sta 739, 90 I.C.H #15

12458
 12459
 12460
 12461
 12462
 12463
 12464
 12465
 12466
 12467
 12468
 12469
 12470
 12471
 12472
 12473
 12474
 12475
 12476
 12477
 12478
 12479
 12480
 12481
 12482
 12483
 12484
 12485
 12486
 12487
 12488
 12489
 12490
 12491
 12492
 12493
 12494
 12495
 12496
 12497
 12498
 12499
 12500

TP	9.24	1242.10 1242.80		1232.86 1232.86
21			10.4	1231.7
20			7.7	1234.4 1241.48
	8.27	1249.75 1250.45	0.62	1242.18
19			8.1	1241.7
			3.7	1246.5
18			3.3	1246.5
17			2.5	1247.3 1247.41
	4.88	1252.29 1252.99	2.34	1248.11 1250.60
B.M.			1.69	1241.50
16			4.5	1248.8 1246.56
	5.62	1252.18 1252.88	5.73	1247.26
15+05.2	culvert		4.8	1248.4
15			4.8	1248.4 1246.56
	5.81	1252.37 1253.07		1247.26
14			4.6	1248.8
13			7.5	1244.9
12			13.1	1239.3 1240.10
	1.85	1241.95 1242.65	12.27	1246.30

Top of side stake sta 21+00

9.5	10.3	11.0	11.6	10.7	10.4	10.5	11.0	10.6	10.3	10.0		
30	19.5	10.5	9	6.5	4	5.5	9	10	2.5	30		
6.5	6.2	6.8	8.5	8.5	7.4	7.7	7.8	8.3	7.7	6.2	5.7	5.7
30	23.5	17.5	12	11	7	4	4	6	7	17	25	30
4.8	4.7	5.7	8.3	8.2	8.1				8.2	8.7	5.9	6.3
30	20	14.5	8.5	6.5	4				8	7	15	30
0.8	1.5	3.4	3.1	3.3	3.6	4.1	3.2	3.4	4.0	4.0		
30	14.5	10	7	4	6	8.5	9.5	23.5	2.5	30		
0.0	0.4	1.4	2.2	3.0	2.5	2.5	2.7	3.1	2.2	3.0	3.3	3.8
30	26.5	17	9	7.5	4.5	4	6	5.5	10.5	24	26	30

R.P. spike E. root 30" Maple 20.5 ht. sta. 16+28

27	27	37	42	48	4.5	4.9	6.1	5.2	5.7	5.7	6.4	6.4
30	20	14	8.5	5.5	4	6	10	11.5	2.5	28	28.5	30
5.03	12.40	12.40	12.40	12.40	12.40	12.40	12.40	12.40	12.40	12.40	12.40	12.40
19.32	4.2	5.3	6.3	6.7	6.6	5.2	4.8	5.2	6.1	6.8	8.0	10.3
30	30	27	14.5	9.5	7	4	4.5	4	6.5	8.8	30	100
3.2	4.0	5.2	6.1	4.9	4.8	5.1	5.5	6.2	7.0	7.1		
30	20	10	9	5	4	6.5	8.5	7.4	2.5	30		
1.4	2.7	4.3	5.2	4.7	4.6	4.2	6.0	5.1	4.6	6.0		
30	18.5	8.5	3.5	3	4	9	12.5	14	17	30		
5.0	5.3	7.6	8.2	7.6	7.5	7.8	8.9	7.8	6.4	6.7	6.7	
30	13	6.5	5.5	5	4	9	12.5	14	20.5	26	30	
9.7	9.9	13.4	14	13.7								
30	14.5	7	6	3.5								
13.1	13.0	13.4	14.2	13.5	10.3	10.3	10.3	10.3	10.3	10.3	10.3	10.3
30	14.5	7	6	3.5								

		1242.65 1241.95		
11			5.0	1237.0
10+98	culvert		5.0	1237.0
		1242.48		1237.29
		5.19	4.66	1237.99
10			5.2	1236.8
		1245.26		1238.18
		7.08	4.30	1239.35
9			6.4	1239.9
8+19	culvert		6.7	1238.6
8			6.9	1238.4
7			6.3	1239.0
B.M				1243.01
		1241.86	2.25	1243.54
		8.24	11.69	1233.62
6			12.3	1229.6
5			17.9	1224.0
		1233.96		1233.62
		0.34		1234.32
5			19.0	1224.0
4+10			11.7	1223.3
4			12.4	1222.6

6.5	6.8	7.2	5.6	5.2	5.0	4.8	5.3	5.7	5.2	8.3
30	18	8	4	2	2	5.5	11	13	14.5	30
1236.1	1235.8	1234.0	1234.9	1236.5	1237.0	1237.2	1236.7	1236.4	1235.8	1235.0
5.1	4.5	2.0	2.1	5.7	5.3	5.0	4.8	5.3	5.6	5.3
30	30	30	30	30	30	30	30	30	30	30

1241.9	1239.7	1239.3	1237.8	1237.0	1237.0	1237.8	1238.6	1238.4	1237.5	1236.6
5.4	5.6	6.0	7.5	8.0	7.5	6.5	6.7	6.9	7.8	8.7
30	30	30	30	30	30	30	30	30	30	30

R.P. spike, N.W. root 18" Maple 22' ft. sta 7+25

Largest stone in ditch

12.9	12.9	12.4	13.3	13.6	13.3	13.4	6.0	9.1	3.5
30	25	1.5	20	8	12	7.5	23	30	50

17.9	10.2	9.2	6.5
30	23	30	50

14.4	10.6	10.5	11.5	10.1	10.0	10.0	10.6
30	24.5	14.5	5.0	7	2	1	5

12.0	11.8	12.3	13.3	14.2	11.7	11.7	12.1	11.9	12.7	12.9	12.5
30	23.5	13.5	10	6	2	7.5	9	10	14.5	25	50

12.3	12.4	12.2	12.0	12.6	12.4	12.5	12.0	14.8	15.3
30	22	12	5	2.5	2	9	10	25	30

	1233.96		
	1234.11		
3+84	4.90	1227.27	1221.67
		1226.57	1222.37
		5.1	1221.5
	9.64	1232.24	1222.60
		1232.71	1223.30
3		8.7	1223.5
2		3.2	1229.0
		1229.2	1229.34
	3.58	1233.12	1230.04
		2.90	
1		5.6	1227.3
		1224.61	1221.17
	3.44	1225.71	1221.87
0+09		5.4	1219.2
		1231.43	1223.11
	9.32	1233.13	1223.81
0+09		1.50	
0+00		14.3	1218.1
		1223.14	1220.07
	3.10	1225.84	1220.74
0+00		5.0	1218.1
0-26.7	culvert	4.8	1218.3
0-59	culvert		
		4.9	1218.2
0-30		4.7	1218.4
0-50		4.9	1218.2
0-100		4.6	1218.5
0-150		1.2	1221.9
		1220.86	
B.M		2.28	1221.52

1222.1	1221.7	1218.6	1219.7	1221.5	1221.5	1221.5	1220.9	1219.7	1218.5	1217.0	1216.5	1214.4	1213.5
4.9	4.9	8.0	6.9	5.1	5.1	5.7	4.9	8.1	9.6	10.1	10.2	10.2	10.2
30	30	30	30	30	30	30	30	30	30	30	30	30	30
6.8	7.4	9.4	2.8	8.7	8.6	8.8	9.6	8.9	8.5	8.5	9.2	9.2	9.2
30	30	30	30	30	30	30	30	30	30	30	30	30	30
1.8	1.8	4.4	3.2	3.9	5.1	4.1	2.0	2.0	2.0	2.0	2.0	2.0	2.0
30	30	30	30	30	30	30	30	30	30	30	30	30	30
0.5	2.1	3.6	6.6	5.6	5.4	5.5	6.5	4.5	4.9	6.2	6.2	6.2	6.2
30	30	30	30	30	30	30	30	30	30	30	30	30	30
1221.4	1220.1	1218.8	1217.7	1220.4	1220.4	1220.4	1220.4	1220.4	1220.4	1220.4	1220.4	1220.4	1220.4
3.2	4.7	5.8	6.9	4.0	5.4	8.4	10.1	13.4	17.5	18.0	20.8	20.8	20.8
30	30	30	30	30	30	30	30	30	30	30	30	30	30
1226.9	1226.0	1223.6	1223.6	1220.9	1220.1	1220.1	1218.1	1218.1	1215.9	1214.1	1211.1	1207.6	1205.6
5.5	6.4	8.9	8.9	6.5	8.8	11.5	12.3	12.3	12.3	12.3	12.3	12.3	12.3
30	30	30	30	30	30	30	30	30	30	30	30	30	30
1218.3	1218.1	1217.2	1216.4	1215.3	1214.4	1214.0	1211.0	1208.8	1208.8	1208.8	1208.8	1208.8	1208.8
9.8	5.4	6.7	7.8	8.7	8.1	12.1	14.3	14.3	14.3	14.3	14.3	14.3	14.3
30	30	30	30	30	30	30	30	30	30	30	30	30	30

4.2 5.2 6.1 7.2 6.7 5.2 5.0 4.9 5.3 8.5 8.2 8.3 9.4 8.7 13.3
 100 50 30 30 30 30 30 30 30 30 30 30 30 30

R. P.
 R. R. spike W. side 20"E/m, 24.5'R, 0-52
 50 Elm

1223.14
~~1223.84~~
1229.32

6.54

~~1230.02~~

0.36

1222.78

~~1223.48~~

0-200

4.5

1218.6

0-250

5.1

1218.0

0-300

5.6

1217.5

Stopped June 1 1930
D. Parks, L. Ernst, H. Quiggle

0.51 1251.86

1251.35

3.13 1241.64

13.35 1238.51

1.10 1135.73

7.01 1234.63

3.89 1231.84

June 5, 1930, Fair, 800 Marks, Snyder.
R.P. spike, S. side 8" Elm 27'R. 36+42

R.P. spike, 8" Elm, 25+70 L.

Oct. 7, 1930

D. Parks 62
R. Hasse)
T. Snyder

cloudy

B.M.	5.95	1226.81		1220.86
0+00				1220.00
	6.43	1233.13	0.11	1226.70
1+00				1227.00
	4.99	1235.76	2.36	1230.77
2+00				1229.00
				1225.31
3+00				
T.P.		10.41		1225.35

R.P. spike, W. side	20" Elm Right	Sta 0+00
6.81	9.97	$\frac{F 13.2}{19.0}$
6.13	0.55	$\frac{C 5.6}{28.5}$
4.80		$\frac{C 1.3}{22.5}$
6.76	4.99	$\frac{C 1.8}{23.0}$
5.06		$\frac{C 1.7}{22.5}$
10.45	10.41	$\frac{0.0}{20.0}$
slope hub Lt. Sta., 3+00		

	+	H.I	-	Elev.
T.P.	6.18	1231.53		1225.35
4				1223.81
T.P.	11.86	1235.45	8.04	1223.49
5				1225.25
T.P.	13.04	1242.20	6.29	1229.16
6				1231.50
7				1237.69
8				1239.00
T.P.	7.86	1246.69	3.37	1238.83
B.M.			3.75	1242.94
	3.75	1246.76		1243.01
9				1238.78
T.P.	0.48	1242.06	5.18	1241.58
10				1237.50
11				1238.50
T.P.	5.23	1246.07	1.22	1240.84
12				1240.81
T.P.	7.71	1255.14	0.64	1245.43
13				1244.75
14				1249.16

Oct. 14, 1930
 Clear 80°
 D, Parks - 63
 R, Hassel
 T, Snyder

<u>L</u>			<u>R</u>	
slope hub Lt. Sta. 3+00				
7.72	15.41	$\frac{F2.7}{17.0}$	10.86	$\frac{F3.1}{16.5}$
10.20	11.96	$\frac{F1.8}{17.0}$	2.88	$\frac{C7.3}{30.5}$
10.70	13.04	$\frac{F2.7}{17.0}$	4.39	$\frac{C6.3}{29.5}$
4.51	1.23	$\frac{C3.3}{26.5}$	0.51	$\frac{C4.0}{26.0}$
3.20	3.62	$\frac{F0.4}{20.0}$	4.33	$\frac{F1.1}{20.0}$
R.P. Spike, N.W. Root 18" Maple, Right Hq. 7+25				
Reference above				
7.98	5.90	$\frac{C2.1}{26.5}$	8.34	$\frac{F0.4}{22.0}$
4.56	0.51	$\frac{C9.1}{25.0}$	5.12	$\frac{F0.6}{19.0}$
3.56	6.72	$\frac{F3.2}{19.5}$	5.98	$\frac{F2.4}{12.5}$
5.26	2.95	$\frac{C2.3}{23.5}$	5.10	$\frac{C0.2}{19.5}$
10.39	6.50	$\frac{C3.9}{25.0}$	9.07	$\frac{C1.3}{22.5}$
5.98	4.60	$\frac{C1.4}{23.0}$	7.31	$\frac{F1.3}{20.0}$

	+	H.V.	-	E.K.V.	
15				1248.87	
T.P.	5.56	1252.69	8.02	1247.12	
16				1248.24	
B.M.			2.08	1250.60	1250.60 ^{fac.}
T.P.	3.35	1253.95		1250.60	
17				1247.61	
18				1245.77	
19				1241.37	
T.P.	3.42	1245.29	12.08	1241.87	
20				1235.68	
T.P.	2.71	1235.86	12.14	1233.15	
21				1231.44	
22				1230.00	
T.P.	5.14	1234.39	6.61	1229.25	
23				1230.00	
24				1230.22	
T.P.	5.13	1235.30	4.22	1230.17	
25				1231.75	
26				1233.36	
T.P.			0.70	1234.60	
27				1234.13	

	L	R
	6.27	6.86
	$\frac{E0.6}{20.5}$	9.20
		$\frac{F2.9}{17.5}$
	4.44	2.56
	$\frac{C1.9}{24.5}$	5.56
		$\frac{F1.1}{20.0}$
	R.P. Spike, E. Root 30" Maple, Left Sta. 16+28	
	6.34	4.85
	$\frac{C1.5}{22.0}$	6.81
		$\frac{E0.5}{20.0}$
	8.21	4.79
	$\frac{C3.4}{24.5}$	7.65
		$\frac{E0.6}{21.5}$
	12.61	8.35
	$\frac{C4.3}{26.0}$	9.58
		$\frac{E2.7}{24.5}$
	9.61	9.29
	$\frac{C0.2}{21.0}$	8.86
		$\frac{E0.8}{21.0}$
	4.42	3.47
	$\frac{C1.0}{22.5}$	4.23
		$\frac{E0.2}{21.5}$
	5.86	5.73
	$\frac{C0.1}{21.0}$	7.14
		$\frac{F1.3}{19.0}$
	4.39	4.95
	$\frac{E0.6}{20.5}$	5.70
		$\frac{F1.3}{16.5}$
	4.17	4.26
	$\frac{E0.1}{16.5}$	2.82
		$\frac{C6.4}{21.0}$
	3.55	5.36
	$\frac{F1.8}{17.0}$	5.23
		$\frac{F1.7}{17.5}$
	1.94	4.43
	$\frac{E2.5}{19.0}$	5.06
		$\frac{F3.1}{20.0}$
	X, W. Head Wall, 1' N. of S. End, 26+15	

Oct. 16, 1930.
clear, 80°

D. Parks.
R. Hassel.
T. Snyder.

+ H.I - Fled.

8.13 1242.73 1234.60

27 1234.13

28 1234.76

29 1235.39

30 1236.05

31 1237.00

T.P. 6.86 1244.99 4.60 1238.13

32 1238.00

33 1239.00

34 1240.00

35 1241.33

T.P. 8.80 1253.54 0.25 1244.74

36 1245.00

B.M. 2.15 1251.39 1251.35

T.P. 2.15 1253.50 1251.35

37 1248.19

38 1246.50

L R

X-W. Headwall 1/4 N of S. end, 26+15

8.00 10.67 $\frac{F2.1}{17.5}$ 9.88 $\frac{F1.3}{17.0}$

7.99 7.80 $\frac{C0.2}{21.0}$ 6.82 $\frac{C1.2}{22.0}$

7.38 4.26 $\frac{C3.1}{25.5}$ 2.85 $\frac{C4.5}{26.5}$

6.68 5.80 $\frac{C0.9}{21.0}$ 6.02 $\frac{C0.7}{21.0}$

5.73 5.49 $\frac{C0.2}{21.0}$ 5.70 $\frac{0.0}{20.5}$

6.99 3.91 $\frac{C3.1}{24.0}$ 4.67 $\frac{C2.3}{23.5}$

5.99 3.00 $\frac{C3.0}{24.5}$ 3.04 $\frac{C3.0}{24.0}$

4.99 4.06 $\frac{C0.7}{22.0}$ 4.36 $\frac{C0.6}{27.0}$

3.66 3.46 $\frac{C0.2}{19.0}$ 3.55 $\frac{C0.1}{19.0}$

8.54 8.80 $\frac{F0.3}{19.5}$ 7.63 $\frac{C0.9}{21.0}$

R.P. Spike, N. side 10th Elm, R. Sta. 36+42

5.31 3.05 $\frac{C2.3}{23.5}$ 1.83 $\frac{C3.5}{23.0}$

7.00 5.90 $\frac{C1.1}{22.0}$ 5.07 $\frac{C1.9}{22.5}$

1253.50

39				1244.00
40				1241.88
T.P.	4.54	1247.42	10.62	1242.88
41				1244.00
42				1242.19
43				1241.75
44				1241.22
45				1242.19
T.P.	6.60	1250.44	3.58	1248.84
46				1243.38
47				1244.57
48				1245.76
B.M.			4.73	1245.71 1245.75 ^{rec.}

9.00	9.43	$\frac{F0.4}{20.5}$	9.87	$\frac{F0.9}{20.0}$
11.62	10.63	$\frac{C1.0}{21.0}$	11.41	$\frac{C0.2}{19.0}$
5.42	6.06	$\frac{F0.6}{20.5}$	5.65	$\frac{F0.2}{20.0}$
5.23	5.55	$\frac{F0.3}{21.0}$	6.16	$\frac{F0.9}{19.5}$
5.67	5.32	$\frac{C0.4}{21.0}$	5.98	$\frac{F0.3}{20.5}$
6.20	9.86	$\frac{C1.5}{22.5}$	4.98	$\frac{C1.2}{22.0}$
5.23	3.58	$\frac{C1.7}{23.0}$	3.42	$\frac{C1.8}{22.5}$
7.06	6.27	$\frac{C0.8}{21.0}$	6.18	$\frac{C0.9}{21.5}$
5.87	6.93	$\frac{F1.1}{16.5}$	6.80	$\frac{F0.9}{19.5}$
4.68	6.14	$\frac{F1.5}{18.0}$	6.60	$\frac{F1.9}{16.5}$
Large headed nail, S. Post, 36" Poplar Left, Sta. 739+90 I.C.H.#15				

Sta 3+84, 18" Pipe Culvert,

3.54 1224.21 1220.67

3.93 1217.28

1.43 1218.78

Sta 10+98 15" Pipe Culvert-

5.03 1240.37 1235.34

7.75 1231.62

3.75 1239.62

Nov. 3, 1930 Marks, D.R. Parks. Cloudy, 83°⁶⁷

slope hub, 4+00 R,

6.93 cut 3'0" stake 30' R.

5.43 cut 4'0" " 30' L.

slope Hub, 11+00, L,

8.75 Cut 1'0" stake, 30' R.

5.75 Cut 2'0" " 30' L

Nov. 11, 1930 63

D. Parks
R. Hasel
T. Snyder

Rail

R.P. spike N.W. root 18" Maple, RT. Sta 7425

3.14 C 3'6" stake 30' LT

4.14 C 1'6" stake 30' RT

R.P. spike, E root 30" Maple Lt, sta. 1628

2.04 C 4'0" stake 30' LT,

7.43 0.0 stake 30' RT,

R.P. spike S.E. side 8" Elm 30.5 Lt, sta. 1628

0.88 C 4'6" stake 30' LT,

3.89 C 4'0" stake 30' RT,

Large Headed Nail S root 36" Poplar

0.84 C 3'0" stake 30' LT

4.84 C 3'0" stake 30' RT

Sta. 8+19

B.M. 2.65 1245.66 1243.01

4.42 1243.90 6.18 1237.45

6.64 1237.24

7.64 1236.24

Sta. 15+05.2

B.M. 1.64 1252.24 1250.60

6.54 1245.70

7.43 1244.81

Sta. 22+74.5

B.M. 1.82 1233.66 1231.84

5.38 1228.28

7.89 1225.77

Sta 4+84

B.M. 1.09 1246.82 1245.73

4.88 1247.10 4.60 1242.22

6.84 1241.26

7.84 1237.26

4:24:43 AM
 home
 hall

KLEIN DITCH

BM.	8.23	108.23	100.00
22+65		10.65	97.58
22		102.73	98.7
21			9 102.2
20			103.2
19			104.7
T.P. 18	7.05	115.73	1.55 106.68 19+0
			105.9
17			108.1
+40	= ±	Klein E P/L	
16			111.2
15			112.1
14			113.2
T.P. 13	7.03	122.29	0.47 115.26
			115.2
12			117.2

Note: Stakes offset $\pm 15'$
 north of proposed
 Huntsg new ditch

S.W cor of SW end conc drive
 culut

W. End of conc. ditch floor
 North Stk South



	5.80	ch 9.5-15'
	4.34	ch 6.0-15'
	3.56	ch 5.0-15'
	1.54	ch 3.55-15'
	6.91	ch 9.8-15'
	6.09	7.6-15'
	2.98	4.5-15'
ch ± 40 3.7	2.43	3.6-15'
	0.47	2.5-15'
	5.92 ch ± 3	7.1-15'
	4.08	5.1-15' ch ± 60

11					119.3
10					121.1
T.P.	7.83	129.88 ✓	0.24	122.05	10+0
9					121.9
8					123.6
7					125.3
6					126.4
5					128.9
T.P.	10.01	139.36 ✓	0.53	129.35 ✓	
4					130.6
3					131.5
2					132.8
1					134.9
0					137.7 →
T.P.	11.44	149.69 ✓	1.11	138.25 ✓	
-1					140.2

	1.97	3.0 15	ch
stks	0.24	1.2 15	ch ± 80'
122.98	6.90	8.0 15	
124.64	5.24	6.3 15	6.8 ch ± 80
126.58	3.30	4.6 15	
127.81	2.07	3.5 15	
129.35	0.53	1.0 15	
131.33	8.03	8.8 15	
133.04	6.32	7.9 15	
134.83	4.53	6.6 15	ch
136.09	3.27	4.5 15	ch
138.25	1.11	1.7 15	
138.25			
141.06	8.63	9.5 15	

-2				142.0	143.79	5.90		$\frac{7.7}{15}$
-3				145.0	146.05	3.64	4.73	143.1 6.6
-4				145.2	148.21	1.48	4.5	25ch 15
-5				148.5	149.27	0.42	1.2	15
T.P	494	154.21	0.42	149.27				
-6				150.71	151.32	2.89	3.50	15

fence - 6+30

	+	H.I.	-	Elev
BM	8.19	108.19		100.00
				103.07 (15')
0				
1				104.02
2				104.92
3				107.05
4				108.19
T.P.	9.83	118.02	0.00	108.19
5				109.95
6				112.48
7				113.13
8				114.86
9				116.61
10				117.91
T.P.	9.55	127.57	0.00	118.02
11				119.65

KLEIN DITCH H
JUNE 45

Pam
Hall
Canfield

72

	Stk	£
S.W. & S Wend drive Cubt		
8.05	(12') 5.12	
= 65 H.W. of west end paved gutter		
ditch	Stk	£
6.85	4.17 (12')	5.56
3's		
4.95	3.27	4.48
2's SW		
3.55	1.14	3.55
0		
2.10	0.00	
6's		
9.64	8.07	9.64
0		
7.11	5.54	7.11
0'		
6.12	4.89	6.12
5.52	3.16	5.02
4's		
1.11	1.41	3.14
27's		
0.11		1.11
100' Spk. on twin Elm	66' W. of barn.	
10.28	7.92	9.92
57's		

Stks set on 12' offset
South

	+	41	-	Elev.
		127.57		
12				121.74
13				122.62
14				124.67
15				126.54
16				127.57
T.P.	11.32	138.89	0.00	127.57
17		138.17		129.37
18				131.72
19				132.16
20				133.95
Form Sta. 240				134.86
21				135.95
22				138.17
TP	-9.17	147.34	0.72	138.17
23				141.05
24				143.44

Ditch	Stk	¢
	5.83	7.30
7.38	4.95	6.02
100'		
2.90	2.90	4.16
2.64	1.03	2.03
35'S		
	0.00	1.15
138.9		
11.30	9.52	11.03
32'S		
	7.17	9.18
8.58	6.73	7.64
16'S		
6.92	4.94	6.56
4'S		
	old stake	4.03
4.51	2.94	4.51
2.62	0.72	2.08
4 N.		
7.33	6.29	7.33
	3.90	6.09
6.70	- South	hole

H. Patterson #53 Clay Street Thompson
P. 100-9 Elev 2nd Culvert N. of Moseley

3-25-61 Windy Cool 45°

B.M.	2.85	102.85	100.00	Spk w. side C.E.I. # 593431
Inlet		7.43	95.42	
Outlet		7.01	95.84	
0+50		7.21	95.64	
1+00		8.11	94.74	
+50		9.25	93.60	
2+00		10.23	92.62	
+50		11.96	90.89	
3+00		13.20	89.65	
B.M.	2.85	100.00		

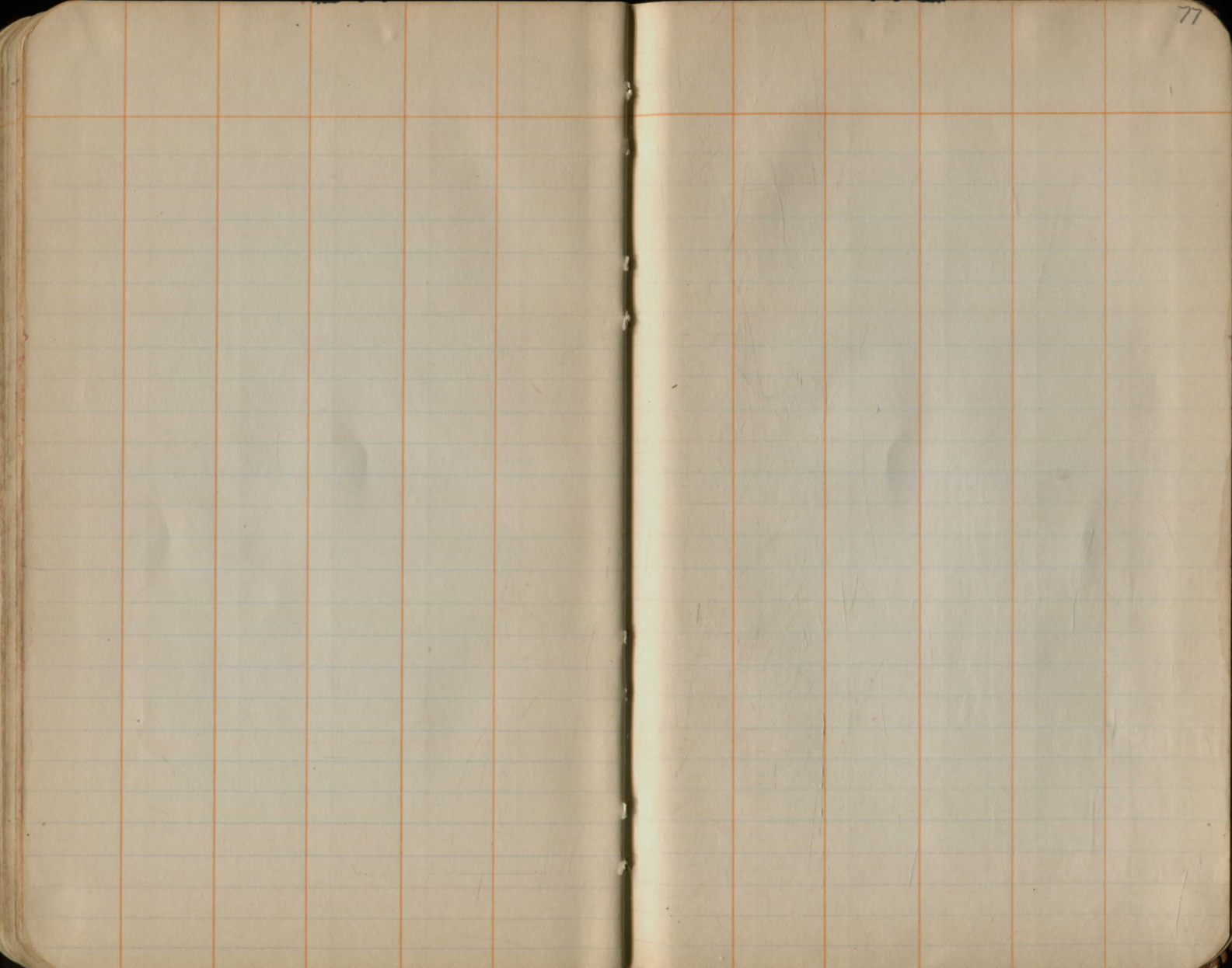


TABLE OF INCHES REDUCED TO DECIMALS OF A FOOT.

Inch	Dec.	Inch	Dec.	Inch	Dec.	Inch	Dec.	Inch	Dec.	Inch	Dec.	Inch	Dec.	Inch	Dec.
1	.0833	11	.8958	21	.7083	31	.5208	41	.3333	51	.1458	61	-.0417	71	.1458
2	.1667	12	.9167	22	.7250	32	.5375	42	.3500	52	.1625	62	-.0292	72	.1625
3	.2500	13	.9333	23	.7417	33	.5542	43	.3667	53	.1792	63	-.0167	73	.1792
4	.3333	14	.9500	24	.7583	34	.5708	44	.3833	54	.1958	64	.0000	74	.1958
5	.4167	15	.9667	25	.7750	35	.5875	45	.4000	55	.2125	65	.0167	75	.2125
6	.5000	16	.9833	26	.7917	36	.6042	46	.4167	56	.2292	66	.0333	76	.2292
7	.5833	17	.9999	27	.8083	37	.6208	47	.4333	57	.2458	67	.0500	77	.2458
8	.6667	18		28	.8250	38	.6375	48	.4500	58	.2625	68	.0667	78	.2625
9	.7500	19		29	.8417	39	.6542	49	.4667	59	.2792	69	.0833	79	.2792
10	.8333	20		30	.8583	40	.6708	50	.4833	60	.2958	70	.1000	80	.2958
11	.9167														

PLEASE RETURN TO
 GEauga COUNTY ENGINEER
 COURT HOUSE
 CHARDON, O.
 PHONE 250-X

B. K. ELLIOTT COMPANY, PITTSBURG, PA.
 DRAWING MATERIALS AND SURVEYING INSTRUMENTS



13 20
 7 43

 5.77

